

TAS2R5 Antibody (Center)

Purified Rabbit Polyclonal Antibody (Pab)

Catalog # AP22364c

Product Information

Application	WB, E
Primary Accession	Q9NYW4
Reactivity	Human
Host	Rabbit
Clonality	polyclonal
Isotype	Rabbit IgG
Clone Names	RB49742
Calculated MW	34505

Additional Information

Gene ID	54429
Other Names	Taste receptor type 2 member 5, T2R5, TAS2R5
Target/Specificity	This TAS2R5 antibody is generated from a rabbit immunized with a KLH conjugated synthetic peptide between 183-215 amino acids from the Central region of human TAS2R5.
Dilution	WB~~1:1000 E~~Use at an assay dependent concentration.
Format	Purified polyclonal antibody supplied in PBS with 0.09% (W/V) sodium azide. This antibody is purified through a protein A column, followed by peptide affinity purification.
Storage	Maintain refrigerated at 2-8°C for up to 2 weeks. For long term storage store at -20°C in small aliquots to prevent freeze-thaw cycles.
Precautions	TAS2R5 Antibody (Center) is for research use only and not for use in diagnostic or therapeutic procedures.

Protein Information

Name	TAS2R5
Function	Receptor that may play a role in the perception of bitterness and is gustducin-linked. May play a role in sensing the chemical composition of the gastrointestinal content. The activity of this receptor may stimulate alpha gustducin, mediate PLC-beta-2 activation and lead to the gating of TRPM5.
Cellular Location	Membrane; Multi-pass membrane protein.

Tissue Location

Expressed in subsets of taste receptor cells of the tongue and palate epithelium and exclusively in gustducin-positive cells

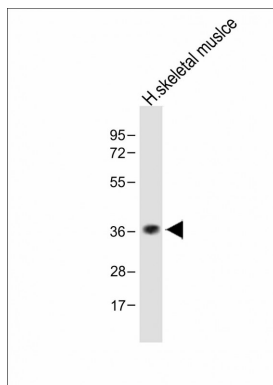
Background

Receptor that may play a role in the perception of bitterness and is gustducin-linked. May play a role in sensing the chemical composition of the gastrointestinal content. The activity of this receptor may stimulate alpha gustducin, mediate PLC-beta-2 activation and lead to the gating of TRPM5.

References

Adler E., et al. Cell 100:693-702(2000).
Fischer A., et al. Mol. Biol. Evol. 22:432-436(2005).
Hillier L.W., et al. Nature 424:157-164(2003).
Chandrashekar J., et al. Cell 100:703-711(2000).
Montmayeur J.-P., et al. Curr. Opin. Neurobiol. 12:366-371(2002).

Images



Anti-TAS2R5 Antibody (Center) at 1:1000 dilution + Human skeletal muscle lysate Lysates/proteins at 20 µg per lane. Secondary Goat Anti-Rabbit IgG, (H+L), Peroxidase conjugated at 1/10000 dilution. Predicted band size : 36 kDa Blocking/Dilution buffer: 5% NFDM/TBST.

Please note: All products are 'FOR RESEARCH USE ONLY. NOT FOR USE IN DIAGNOSTIC OR THERAPEUTIC PROCEDURES'.