

PD L1 Antibody (C-Term)

Purified Rabbit Polyclonal Antibody (Pab)

Catalog # AP22365b

Product Information

Application	WB, E
Primary Accession	Q9NZQ7
Reactivity	Human
Predicted	Human
Host	Rabbit
Clonality	polyclonal
Isotype	Rabbit IgG
Clone Names	RB58901
Calculated MW	33275

Additional Information

Gene ID	29126
Other Names	Programmed cell death 1 ligand 1, PD-L1, PDCD1 ligand 1, Programmed death ligand 1, B7 homolog 1, B7-H1, CD274, CD274, B7H1, PDCD1L1, PDCD1LG1, PDL1
Target/Specificity	This PD L1 antibody is generated from a rabbit immunized with a KLH conjugated synthetic peptide between 252-290 amino acids from the human region of human PD L1.
Dilution	WB~~1:1000 E~~Use at an assay dependent concentration.
Format	Purified polyclonal antibody supplied in PBS with 0.09% (W/V) sodium azide. This antibody is purified through a protein A column, followed by peptide affinity purification.
Storage	Maintain refrigerated at 2-8°C for up to 2 weeks. For long term storage store at -20°C in small aliquots to prevent freeze-thaw cycles.
Precautions	PD L1 Antibody (C-Term) is for research use only and not for use in diagnostic or therapeutic procedures.

Protein Information

Name	CD274 (HGNC:17635)
Function	Plays a critical role in induction and maintenance of immune tolerance to self (PubMed: 11015443 , PubMed: 28813410 , PubMed: 28813417 , PubMed: 31399419). As a ligand for the inhibitory receptor PDCD1/PD-1,

modulates the activation threshold of T-cells and limits T-cell effector response (PubMed:[11015443](#), PubMed:[28813410](#), PubMed:[28813417](#), PubMed:[36727298](#)). Through a yet unknown activating receptor, may costimulate T-cell subsets that predominantly produce interleukin-10 (IL10) (PubMed:[10581077](#)). Can also act as a transcription coactivator: in response to hypoxia, translocates into the nucleus via its interaction with phosphorylated STAT3 and promotes transcription of GSDMC, leading to pyroptosis (PubMed:[32929201](#)).

Cellular Location

Cell membrane; Single-pass type I membrane protein. Early endosome membrane; Single-pass type I membrane protein. Recycling endosome membrane; Single-pass type I membrane protein. Nucleus. Note=Associates with CMTM6 at recycling endosomes, where it is protected from being targeted for lysosomal degradation (PubMed:28813417). Translocates to the nucleus in response to hypoxia via its interaction with phosphorylated STAT3 (PubMed:32929201). [Isoform 2]: Endomembrane system; Single-pass type I membrane protein

Tissue Location

Highly expressed in the heart, skeletal muscle, placenta and lung. Weakly expressed in the thymus, spleen, kidney and liver. Expressed on activated T- and B-cells, dendritic cells, keratinocytes and monocytes.

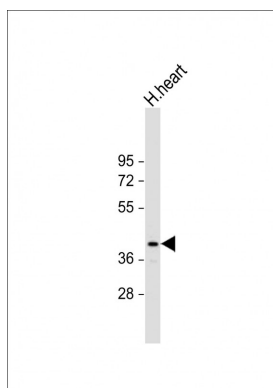
Background

Involved in the costimulatory signal, essential for T- cell proliferation and production of IL10 and IFNG, in an IL2- dependent and a PDCD1-independent manner. Interaction with PDCD1 inhibits T-cell proliferation and cytokine production.

References

Dong H.,et al.Nat. Med. 5:1365-1369(1999).
Freeman G.J.,et al.J. Exp. Med. 192:1027-1034(2000).
He X.-H.,et al.Acta Pharmacol. Sin. 26:462-468(2005).
Chi X.-Y.,et al.Submitted (NOV-2005) to the EMBL/GenBank/DDBJ databases.
Ota T.,et al.Nat. Genet. 36:40-45(2004).

Images



Anti-PD L1 Antibody (C-Term) at 1:1000 dilution + Human heart whole cell lysate Lysates/proteins at 20 µg per lane. Secondary Goat Anti-Rabbit IgG, (H+L), Peroxidase conjugated at 1/10000 dilution. Predicted band size : 44 kDa Blocking/Dilution buffer: 5% NFDM/TBST.

Please note: All products are 'FOR RESEARCH USE ONLY. NOT FOR USE IN DIAGNOSTIC OR THERAPEUTIC PROCEDURES'.