

CDC25A (S124) Antibody

Purified Rabbit Polyclonal Antibody (Pab)

Catalog # AP22373a

Product Information

Application	IHC-P, WB, E
Primary Accession	P30304
Reactivity	Human, Rat, Mouse
Predicted	Human
Host	Rabbit
Clonality	polyclonal
Isotype	Rabbit IgG
Clone Names	RB59086
Calculated MW	59087

Additional Information

Gene ID	993
Other Names	M-phase inducer phosphatase 1, 3.1.3.48, Dual specificity phosphatase Cdc25A, CDC25A
Target/Specificity	This antibody is generated from a rabbit immunized with a KLH conjugated synthetic peptide between amino acids from human.
Dilution	IHC-P~~1:100 WB~~1:2000 E~~Use at an assay dependent concentration.
Format	Purified polyclonal antibody supplied in PBS with 0.09% (W/V) sodium azide. This antibody is purified through a protein A column, followed by peptide affinity purification.
Storage	Maintain refrigerated at 2-8°C for up to 2 weeks. For long term storage store at -20°C in small aliquots to prevent freeze-thaw cycles.
Precautions	CDC25A (S124) Antibody is for research use only and not for use in diagnostic or therapeutic procedures.

Protein Information

Name	CDC25A
Function	Tyrosine protein phosphatase which functions as a dosage- dependent inducer of mitotic progression (PubMed: 12676925 , PubMed: 14559997 , PubMed: 1836978 , PubMed: 20360007). Directly dephosphorylates CDK1 and stimulates its kinase activity (PubMed: 20360007). Also dephosphorylates CDK2 in complex with cyclin-E, in vitro (PubMed: 20360007).

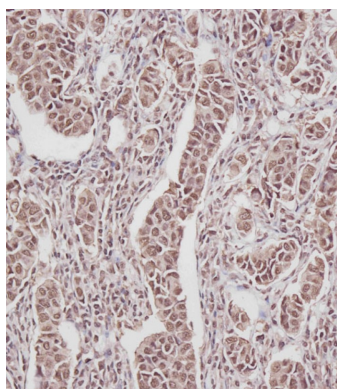
Background

Tyrosine protein phosphatase which functions as a dosage-dependent inducer of mitotic progression. Directly dephosphorylates CDK1 and stimulates its kinase activity. Also dephosphorylates CDK2 in complex with cyclin E, *in vitro*.

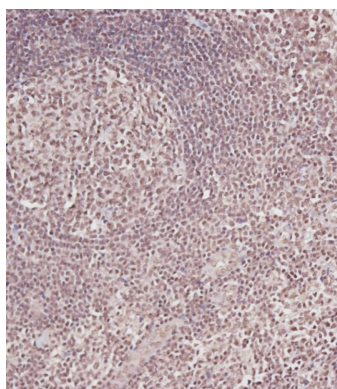
References

Galaktionov K.I.,et al.Cell 67:1181-1194(1991).
Varmeh-Ziaie S.,et al.Submitted (JUL-2002) to the EMBL/GenBank/DDBJ databases.
Wegener S.,et al.Eur. J. Cell Biol. 79:810-815(2000).
Falck J.,et al.Nature 410:842-847(2001).
Donzelli M.,et al.EMBO J. 21:4875-4884(2002).

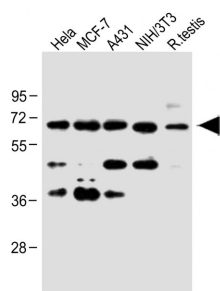
Images



Immunohistochemical analysis of AP22373a on paraffin-embedded Human breast carcinoma tissue. Tissue was fixed with formaldehyde at room temperature. Heat induced epitope retrieval was performed by EDTA buffer (pH9. 0). Samples were incubated with primary antibody(1:100) for 1 hour at room temperature. Undiluted CRF Anti-Polyvalent HRP Polymer antibody was used as the secondary antibody.



Immunohistochemical analysis of AP22373a on paraffin-embedded Human tonsil tissue. Tissue was fixed with formaldehyde at room temperature. Heat induced epitope retrieval was performed by EDTA buffer (pH9. 0). Samples were incubated with primary antibody(1:100) for 1 hour at room temperature. Undiluted CRF Anti-Polyvalent HRP Polymer antibody was used as the secondary antibody.



All lanes : Anti-CDC25A(S124) at 1:1000 dilution Lane 1: HeLa whole cell lysate Lane 2: MCF-7 whole cell lysate Lane 3: A431 whole cell lysate Lane 4: NIH/3T3 whole cell lysate Lane 5: Rat testis lysate Lysates/proteins at 20 µg per lane. Secondary Goat Anti-Rabbit IgG, (H+L), Peroxidase conjugated at 1/10000 dilution. Predicted band size : 59 kDa Blocking/Dilution buffer: 5% NFDM/TBST.

Please note: All products are 'FOR RESEARCH USE ONLY. NOT FOR USE IN DIAGNOSTIC OR THERAPEUTIC PROCEDURES'.