

phospho-Twist1-Y103 antibody

Purified Rabbit Polyclonal Antibody (Pab)

Catalog # AP22382a

Product Information

Application	DB, E
Primary Accession	Q15672
Reactivity	Human, Rat, Mouse
Host	Rabbit
Clonality	Polyclonal
Isotype	Rabbit IgG
Clone Names	RB41360
Calculated MW	20954

Additional Information

Gene ID	7291
Other Names	Twist-related protein 1, Class A basic helix-loop-helix protein 38, bHLHa38, H-twist, TWIST1, BHLHA38, TWIST
Dilution	DB~~N/A E~~Use at an assay dependent concentration.
Format	Purified polyclonal antibody supplied in PBS with 0.09% (W/V) sodium azide. This antibody is purified through a protein A column, followed by peptide affinity purification.
Storage	Maintain refrigerated at 2-8°C for up to 2 weeks. For long term storage store at -20°C in small aliquots to prevent freeze-thaw cycles.
Precautions	phospho-Twist1-Y103 antibody is for research use only and not for use in diagnostic or therapeutic procedures.

Protein Information

Name	TWIST1
Synonyms	BHLHA38, TWIST
Function	Acts as a transcriptional regulator. Inhibits myogenesis by sequestering E proteins, inhibiting trans-activation by MEF2, and inhibiting DNA-binding by MYOD1 through physical interaction. This interaction probably involves the basic domains of both proteins. Also represses expression of pro-inflammatory cytokines such as TNFA and IL1B. Regulates cranial suture patterning and fusion. Activates transcription as a heterodimer with E proteins. Regulates gene expression differentially, depending on dimer

composition. Homodimers induce expression of FGFR2 and POSTN while heterodimers repress FGFR2 and POSTN expression and induce THBS1 expression. Heterodimerization is also required for osteoblast differentiation. Represses the activity of the circadian transcriptional activator: NPAS2-BMAL1 heterodimer (By similarity).

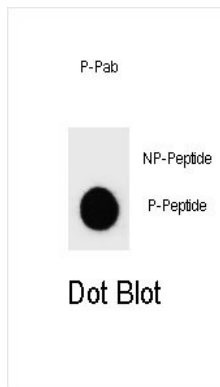
Cellular Location

Nucleus.

Tissue Location

Subset of mesodermal cells.

Images



Dot blot analysis of Phospho-Twist 1-Y103 Phospho-specific Pab (AP22382a) on nitrocellulose membrane. 50ng of Phospho-peptide or Non Phospho-peptide per dot were adsorbed. Antibody working concentrations are 0.6ug per ml.

Citations

- [Matrix Rigidity Controls Epithelial-Mesenchymal Plasticity and Tumor Metastasis via a Mechanoresponsive EPHA2/LYN Complex](#)
- [Screening and identification of epithelial-to-mesenchymal transition-related circRNA and miRNA in prostate cancer](#)

Please note: All products are 'FOR RESEARCH USE ONLY. NOT FOR USE IN DIAGNOSTIC OR THERAPEUTIC PROCEDURES'.