

KLF4(S254) Antibody

Purified Rabbit Polyclonal Antibody (Pab)

Catalog # AP22394a

Product Information

Application	WB, E
Primary Accession	O43474
Reactivity	Human, Rat, Mouse
Host	Rabbit
Clonality	polyclonal
Isotype	Rabbit IgG
Clone Names	R01430NP
Calculated MW	54671

Additional Information

Gene ID	9314
Other Names	Krueppel-like factor 4, Epithelial zinc finger protein EZF, Gut-enriched krueppel-like factor, KLF4, EZF, GKLF
Target/Specificity	This KLF4(S254) antibody is generated from a rabbit immunized with a KLH conjugated synthetic peptide between amino acids from the human region of human KLF4(S254).
Dilution	WB~~1:1000 E~~Use at an assay dependent concentration.
Format	Purified polyclonal antibody supplied in PBS with 0.05% (V/V) Proclin 300. This antibody is purified through a protein A column, followed by peptide affinity purification.
Storage	Maintain refrigerated at 2-8°C for up to 2 weeks. For long term storage store at -20°C in small aliquots to prevent freeze-thaw cycles.
Precautions	KLF4(S254) Antibody is for research use only and not for use in diagnostic or therapeutic procedures.

Protein Information

Name	KLF4 (HGNC:6348)
Synonyms	EZF, GKLF
Function	Transcription factor; can act both as activator and as repressor. Binds the 5'-CACCC-3' core sequence. Binds to the promoter region of its own gene and can activate its own transcription. Regulates the expression of key

transcription factors during embryonic development. Plays an important role in maintaining embryonic stem cells, and in preventing their differentiation. Required for establishing the barrier function of the skin and for postnatal maturation and maintenance of the ocular surface. Involved in the differentiation of epithelial cells and may also function in skeletal and kidney development. Contributes to the down-regulation of p53/TP53 transcription.

Cellular Location

Nucleus {ECO:0000250|UniProtKB:Q60793}. Cytoplasm {ECO:0000250|UniProtKB:Q60793}

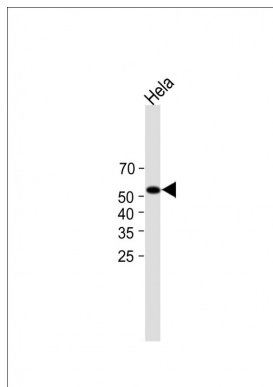
Background

Transcription factor; can act both as activator and as repressor. Binds the 5'-CACCC-3' core sequence. Binds to the promoter region of its own gene and can activate its own transcription. Regulates the expression of key transcription factors during embryonic development. Plays an important role in maintaining embryonic stem cells, and in preventing their differentiation. Required for establishing the barrier function of the skin and for postnatal maturation and maintenance of the ocular surface. Involved in the differentiation of epithelial cells and may also function in skeletal and kidney development. Contributes to the down-regulation of p53/TP53 transcription.

References

Yet S.-F.,et al.J. Biol. Chem. 273:1026-1031(1998).
Foster K.W.,et al.Cell Growth Differ. 10:423-434(1999).
Camacho-Vanegas O.,et al.FASEB J. 27:432-436(2013).
Garrett-Sinha L.A.,et al.Submitted (SEP-1996) to the EMBL/GenBank/DDBJ databases.
Ota T.,et al.Nat. Genet. 36:40-45(2004).

Images



All lanes : Anti-KLF4(S254) Antibody at 1:1000 dilution
Lane 1: HeLa whole cell lysate Lysates/proteins at 20 µg per lane. Secondary Goat Anti-Rabbit IgG, (H+L), Peroxidase conjugated (ASP1615) at 1/15000 dilution. Observed band size : 55kDa Blocking/Dilution buffer: 5% NFDM/TBST.

Please note: All products are 'FOR RESEARCH USE ONLY. NOT FOR USE IN DIAGNOSTIC OR THERAPEUTIC PROCEDURES'.