

# PD L1 Antibody (C-Term)

Purified Rabbit Polyclonal Antibody (Pab)

Catalog # AP22397b

## Product Information

---

Application	WB, E
Primary Accession	<a href="#">Q9NZQ7</a>
Reactivity	Human
Host	Rabbit
Clonality	polyclonal
Isotype	Rabbit IgG
Clone Names	R03065
Calculated MW	33275

## Additional Information

---

Gene ID	29126
Other Names	Programmed cell death 1 ligand 1, PD-L1, PDCD1 ligand 1, Programmed death ligand 1, hPD-L1, B7 homolog 1, B7-H1, CD274, CD274 ( <a href="#">HGNC:17635</a> )
Target/Specificity	This PD L1 antibody is generated from a rabbit immunized with a KLH conjugated synthetic peptide between amino acids from the human region of human PD L1.
Dilution	WB~~1:500-1:1000 E~~Use at an assay dependent concentration.
Format	Purified polyclonal antibody supplied in PBS with 0.05% (V/V) Proclin 300. This antibody is purified through a protein A column, followed by peptide affinity purification.
Storage	Maintain refrigerated at 2-8°C for up to 2 weeks. For long term storage store at -20°C in small aliquots to prevent freeze-thaw cycles.
Precautions	PD L1 Antibody (C-Term) is for research use only and not for use in diagnostic or therapeutic procedures.

## Protein Information

---

Name	CD274 ( <a href="#">HGNC:17635</a> )
Function	Plays a critical role in induction and maintenance of immune tolerance to self (PubMed: <a href="#">11015443</a> , PubMed: <a href="#">28813410</a> , PubMed: <a href="#">28813417</a> , PubMed: <a href="#">31399419</a> ). As a ligand for the inhibitory receptor PDCD1/PD-1, modulates the activation threshold of T-cells and limits T-cell effector response (PubMed: <a href="#">11015443</a> , PubMed: <a href="#">28813410</a> , PubMed: <a href="#">28813417</a> ,

PubMed:[36727298](#)). Through a yet unknown activating receptor, may costimulate T-cell subsets that predominantly produce interleukin-10 (IL10) (PubMed:[10581077](#)). Can also act as a transcription coactivator: in response to hypoxia, translocates into the nucleus via its interaction with phosphorylated STAT3 and promotes transcription of GSDMC, leading to pyroptosis (PubMed:[32929201](#)).

### Cellular Location

Cell membrane; Single-pass type I membrane protein. Early endosome membrane; Single-pass type I membrane protein. Recycling endosome membrane; Single-pass type I membrane protein. Nucleus. Note=Associates with CMTM6 at recycling endosomes, where it is protected from being targeted for lysosomal degradation (PubMed:[28813417](#)). Translocates to the nucleus in response to hypoxia via its interaction with phosphorylated STAT3 (PubMed:[32929201](#)). [Isoform 2]: Endomembrane system; Single-pass type I membrane protein

### Tissue Location

Highly expressed in the heart, skeletal muscle, placenta and lung. Weakly expressed in the thymus, spleen, kidney and liver. Expressed on activated T- and B-cells, dendritic cells, keratinocytes and monocytes.

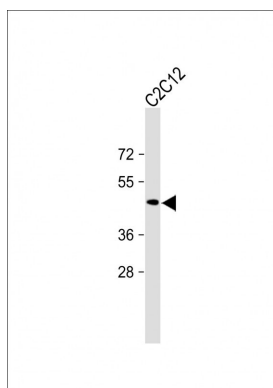
## Background

Plays a critical role in induction and maintenance of immune tolerance to self (PubMed: [11015443](#), PubMed:[28813417](#), PubMed:[28813410](#)). As a ligand for the inhibitory receptor PDCD1/PD-1, modulates the activation threshold of T-cells and limits T-cell effector response (PubMed:[11015443](#), PubMed:[28813417](#), PubMed:[28813410](#)). Through a yet unknown activating receptor, may costimulate T-cell subsets that predominantly produce interleukin-10 (IL10) (PubMed:[10581077](#)).

## References

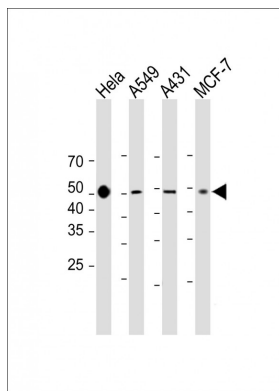
Dong H.,et al.Nat. Med. 5:1365-1369(1999).  
Freeman G.J.,et al.J. Exp. Med. 192:1027-1034(2000).  
He X.-H.,et al.Acta Pharmacol. Sin. 26:462-468(2005).  
Chi X.-Y.,et al.Submitted (NOV-2005) to the EMBL/GenBank/DDBJ databases.  
Ota T.,et al.Nat. Genet. 36:40-45(2004).

## Images



All lanes : Anti-PD L1 Antibody (C-Term) at 1:1000 dilution + Hela whole cell lysate Lysates/proteins at 20 µg per lane. Secondary Goat Anti-Rabbit IgG, (H+L), Peroxidase conjugated (ASP1615) at 1/15000 dilution. Observed band size : 43 kDa Blocking/Dilution buffer: 5% NFDM/TBST.

All lanes : Anti-PD L1 Antibody (C-Term) at 1:1000 dilution  
Lane 1:Hela whole cell lysate Lane 2:A549 whole cell lysate Lane 3:A431 whole cell lysate Lane 4:MCF-7 whole cell lysate Lysates/proteins at 20 µg per lane. Secondary



Goat Anti-Rabbit IgG, (H+L), Peroxidase conjugated (ASP1615) at 1/15000 dilution. Observed band size : 43 kDa Blocking/Dilution buffer: 5% NFDM/TBST.

Please note: All products are 'FOR RESEARCH USE ONLY. NOT FOR USE IN DIAGNOSTIC OR THERAPEUTIC PROCEDURES'.