

# RPS6KA6 antibody

Purified Rabbit Polyclonal Antibody (Pab)

Catalog # AP22414a

## Product Information

---

|                   |                        |
|-------------------|------------------------|
| Application       | WB, E                  |
| Primary Accession | <a href="#">Q9UK32</a> |
| Reactivity        | Human                  |
| Host              | Rabbit                 |
| Clonality         | polyclonal             |
| Isotype           | Rabbit Ig              |
| Clone Names       | R04107                 |
| Calculated MW     | 83872                  |

## Additional Information

---

|                    |   |
|--------------------|---|
| Gene ID            | 27330   |
| Other Names        | Ribosomal protein S6 kinase alpha-6, S6K-alpha-6, 2.7.11.1, 90 kDa ribosomal protein S6 kinase 6, p90-RSK 6, p90RSK6, Ribosomal S6 kinase 4, RSK-4, pp90RSK4, RPS6KA6, RSK4 |
| Target/Specificity | This antibody is generated from a rabbit immunized with a KLH conjugated synthetic peptide between amino acids from human.  |
| Dilution           | WB~~1:2000 E~~Use at an assay dependent concentration.  |
| Format             | Purified polyclonal antibody supplied in PBS with 0.05% (V/V) Proclin 300. This antibody is purified through a protein A column, followed by peptide affinity purification. |
| Storage            | Maintain refrigerated at 2-8°C for up to 2 weeks. For long term storage store at -20°C in small aliquots to prevent freeze-thaw cycles.                                     |
| Precautions        | RPS6KA6 antibody is for research use only and not for use in diagnostic or therapeutic procedures.  |

## Protein Information

---

|          |   |
|----------|---|
| Name     | RPS6KA6   |
| Synonyms | RSK4  |
| Function | Constitutively active serine/threonine-protein kinase that exhibits growth-factor-independent kinase activity and that may participate in p53/TP53-dependent cell growth arrest signaling and play an inhibitory role |

during embryogenesis.

## Cellular Location

Cytoplasm, cytosol. Nucleus. Note=Predominantly cytosolic

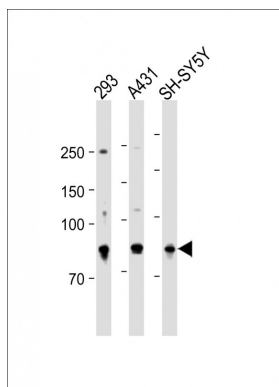
## Background

Constitutively active serine/threonine-protein kinase that exhibits growth-factor-independent kinase activity and that may participate in p53/TP53-dependent cell growth arrest signaling and play an inhibitory role during embryogenesis.

## References

Yntema H.G.,et al.Genomics 62:332-343(1999).  
Ebert L.,et al.Submitted (JUN-2004) to the EMBL/GenBank/DDBJ databases.  
Ota T.,et al.Nat. Genet. 36:40-45(2004).  
Ross M.T.,et al.Nature 434:325-337(2005).  
Mural R.J.,et al.Submitted (SEP-2005) to the EMBL/GenBank/DDBJ databases.

## Images



All lanes: Anti-RPS6KA6 antibody at 1:2000 dilution Lane 1: 293 whole cell lysate Lane 2: A431 whole cell lysate Lane 3: SH-SY5Y whole cell lysate Lysates/proteins at 20 µg per lane. Secondary: Goat Anti-Rabbit IgG, (H+L), Peroxidase conjugated (ASP1615) at 1/15000 dilution. Observed band size: 84 KDa Blocking/Dilution buffer: 5% NFDM/TBST.

Please note: All products are 'FOR RESEARCH USE ONLY. NOT FOR USE IN DIAGNOSTIC OR THERAPEUTIC PROCEDURES'.