

Cytokeratin 20

Purified Rabbit Polyclonal Antibody (Pab)

Catalog # AP22417a

Product Information

Application	WB, IHC-P, E
Primary Accession	P35900
Reactivity	Human
Host	Rabbit
Clonality	polyclonal
Isotype	Rabbit Ig
Clone Names	R03623
Calculated MW	48487

Additional Information

Gene ID	54474
Other Names	Keratin, type I cytoskeletal 20, Cytokeratin-20, CK-20, Keratin-20, K20, Protein IT, KRT20
Target/Specificity	This antibody is generated from a rabbit immunized with a KLH conjugated synthetic peptide between amino acids from human.
Dilution	WB~~1:2000 IHC-P~~1ug/ml E~~Use at an assay dependent concentration.
Format	Purified polyclonal antibody supplied in PBS with 0.05% (V/V) Proclin 300. This antibody is purified through a protein A column, followed by peptide affinity purification.
Storage	Maintain refrigerated at 2-8°C for up to 2 weeks. For long term storage store at -20°C in small aliquots to prevent freeze-thaw cycles.
Precautions	Cytokeratin 20 is for research use only and not for use in diagnostic or therapeutic procedures.

Protein Information

Name	KRT20
Function	Plays a significant role in maintaining keratin filament organization in intestinal epithelia. When phosphorylated, plays a role in the secretion of mucin in the small intestine (By similarity).
Cellular Location	Cytoplasm

Tissue Location

Expressed predominantly in the intestinal epithelium. Expressed in luminal cells of colonic mucosa. Also expressed in the Merkel cells of keratinized oral mucosa; specifically at the tips of some rete ridges of the gingival mucosa, in the basal layer of the palatal mucosa and in the taste buds of lingual mucosa

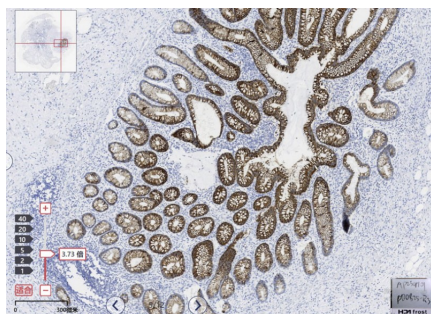
Background

Plays a significant role in maintaining keratin filament organization in intestinal epithelia. When phosphorylated, plays a role in the secretion of mucin in the small intestine (By similarity).

References

Moll R.,et al.Differentiation 53:75-93(1993).
Ota T.,et al.Nat. Genet. 36:40-45(2004).
Zhou Q.,et al.J. Biol. Chem. 281:16453-16461(2006).
Calnek D.,et al.Differentiation 53:95-104(1993).
Moll R.,et al.J. Cell Biol. 111:567-580(1990).

Images



Immunohistochemical analysis of paraffin-embedded Human appendicitis tissue using Cytokeratin 20 antibody performed on the Abcarta® FAIP-48T Fully automated IHC platform. Tissue was fixed with formaldehyde at room temperature, antigen retrieval was by heat mediation with a EDTA buffer (pH9. 0). Samples were incubated with primary antibody(Ready-to-use) for 15 min at room temperature. AmpSee™ Detection Systems(Abcepta:ADR005) was used as the secondary antibody.

Please note: All products are 'FOR RESEARCH USE ONLY. NOT FOR USE IN DIAGNOSTIC OR THERAPEUTIC PROCEDURES'.