

WT1 antibody

Purified Rabbit Polyclonal Antibody (Pab)

Catalog # AP22434a

Product Information

Application	WB, E
Primary Accession	P19544
Reactivity	Human
Host	Rabbit
Clonality	polyclonal
Isotype	Rabbit Ig
Clone Names	R03797
Calculated MW	49188

Additional Information

Gene ID	7490
Other Names	Wilms tumor protein, WT33, WT1
Target/Specificity	This antibody is generated from a rabbit immunized with a KLH conjugated synthetic peptide between amino acids from human.
Dilution	WB~~1:2000 E~~Use at an assay dependent concentration.
Format	Purified polyclonal antibody supplied in PBS with 0.05% (V/V) Proclin 300. This antibody is purified through a protein A column, followed by peptide affinity purification.
Storage	Maintain refrigerated at 2-8°C for up to 2 weeks. For long term storage store at -20°C in small aliquots to prevent freeze-thaw cycles.
Precautions	WT1 antibody is for research use only and not for use in diagnostic or therapeutic procedures.

Protein Information

Name	WT1
Function	Transcription factor that plays an important role in cellular development and cell survival (PubMed: 7862533). Recognizes and binds to the DNA sequence 5'-GCG(T/G)GGGCG-3' (PubMed: 17716689 , PubMed: 25258363 , PubMed: 7862533). Regulates the expression of numerous target genes, including EPO. Plays an essential role for development of the urogenital system. It has a tumor suppressor as well as an oncogenic role in tumor formation. Function may be isoform-specific: isoforms lacking the KTS motif

may act as transcription factors (PubMed:[15520190](#)). Isoforms containing the KTS motif may bind mRNA and play a role in mRNA metabolism or splicing (PubMed:[16934801](#)). Isoform 1 has lower affinity for DNA, and can bind RNA (PubMed:[19123921](#)).

Cellular Location

Nucleus. Nucleus, nucleolus. Cytoplasm. Note=Isoforms lacking the KTS motif have a diffuse nuclear location (PubMed:15520190). Shuttles between nucleus and cytoplasm. {ECO:0000250, ECO:0000269 | PubMed:15520190} [Isoform 4]: Nucleus, nucleoplasm

Tissue Location

Expressed in the kidney and a subset of hematopoietic cells

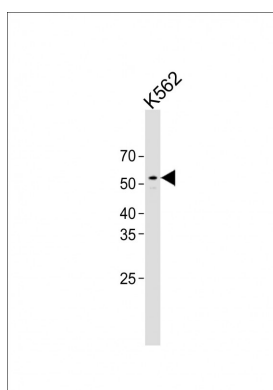
Background

Transcription factor that plays an important role in cellular development and cell survival (PubMed:[7862533](#)). Recognizes and binds to the DNA sequence 5'-GCG(T/G)GGGCG-3' (PubMed:[7862533](#), PubMed:[17716689](#), PubMed:[25258363](#)). Regulates the expression of numerous target genes, including EPO. Plays an essential role for development of the urogenital system. It has a tumor suppressor as well as an oncogenic role in tumor formation. Function may be isoform-specific: isoforms lacking the KTS motif may act as transcription factors (PubMed:[15520190](#)). Isoforms containing the KTS motif may bind mRNA and play a role in mRNA metabolism or splicing (PubMed:[16934801](#)). Isoform 1 has lower affinity for DNA, and can bind RNA (PubMed:[19123921](#)).

References

Gessler M.,et al.Nature 343:774-778(1990).
Haber D.A.,et al.Proc. Natl. Acad. Sci. U.S.A. 88:9618-9622(1991).
Gessler M.,et al.Genomics 12:807-813(1992).
Ota T.,et al.Nat. Genet. 36:40-45(2004).
Taylor T.D.,et al.Nature 440:497-500(2006).

Images



All lanes: Anti-WT1 antibody at 1:1000 dilution + K562 whole cell lysates/proteins at 20 µg per lane. Secondary: Goat Anti-Rabbit IgG, (H+L), Peroxidase conjugated (ASP1615) at 1/15000 dilution. Observed band size: 54 KDa Blocking/Dilution buffer: 5% NFDM/TBST.

Please note: All products are 'FOR RESEARCH USE ONLY. NOT FOR USE IN DIAGNOSTIC OR THERAPEUTIC PROCEDURES'.