

Catenin delta-1

Purified Rabbit Polyclonal Antibody (Pab)

Catalog # AP22436a

Product Information

Application	WB, E
Primary Accession	O60716
Reactivity	Human
Host	Rabbit
Clonality	polyclonal
Isotype	Rabbit Ig
Clone Names	R03701
Calculated MW	108170

Additional Information

Gene ID	1500
Other Names	Catenin delta-1, Cadherin-associated Src substrate, CAS, p120 catenin, p120(ctn), p120(cas), CTNND1, KIAA0384
Target/Specificity	This antibody is generated from a rabbit immunized with a KLH conjugated synthetic peptide between amino acids from human.
Dilution	WB~~1:2000 E~~Use at an assay dependent concentration.
Format	Purified polyclonal antibody supplied in PBS with 0.05% (V/V) Proclin 300. This antibody is purified through a protein A column, followed by peptide affinity purification.
Storage	Maintain refrigerated at 2-8°C for up to 2 weeks. For long term storage store at -20°C in small aliquots to prevent freeze-thaw cycles.
Precautions	Catenin delta-1 is for research use only and not for use in diagnostic or therapeutic procedures.

Protein Information

Name	CTNND1 (HGNC:2515)
Synonyms	KIAA0384
Function	Key regulator of cell-cell adhesion that associates with and regulates the cell adhesion properties of both C-, E- and N-cadherins, being critical for their surface stability (PubMed: 14610055 , PubMed: 20371349). Promotes localization and retention of DSG3 at cell- cell junctions, via its interaction

with DSG3 (PubMed:[18343367](#)). Beside cell-cell adhesion, regulates gene transcription through several transcription factors including ZBTB33/Kaiso2 and GLIS2, and the activity of Rho family GTPases and downstream cytoskeletal dynamics (PubMed:[10207085](#), PubMed:[20371349](#)). Implicated both in cell transformation by SRC and in ligand-induced receptor signaling through the EGF, PDGF, CSF-1 and ERBB2 receptors (PubMed:[17344476](#)).

Cellular Location

Cell junction, adherens junction. Cytoplasm. Nucleus. Cell membrane. Cell junction. Note=Interaction with GLIS2 promotes nuclear translocation (By similarity). Detected at cell-cell contacts (PubMed:15240885, PubMed:17047063). NANOS1 induces its translocation from sites of cell-cell contact to the cytoplasm (PubMed:17047063). CDH1 enhances cell membrane localization (PubMed:15240885). Localizes to cell-cell contacts as keratinocyte differentiation progresses (By similarity) {ECO:0000250|UniProtKB:P30999, ECO:0000269|PubMed:11896187, ECO:0000269|PubMed:15240885, ECO:0000269|PubMed:17047063} [Isoform 2A]: Nucleus [Isoform 4A]: Cytoplasm

Tissue Location

Expressed in vascular endothelium. Melanocytes and melanoma cells primarily express the long isoform 1A, whereas keratinocytes express shorter isoforms, especially 3A. The shortest isoform 4A, is detected in normal keratinocytes and melanocytes, and generally lost from cells derived from squamous cell carcinomas or melanomas. The C-terminal alternatively spliced exon B is present in the p120ctn transcripts in the colon, intestine and prostate, but lost in several tumor tissues derived from these organs

Background

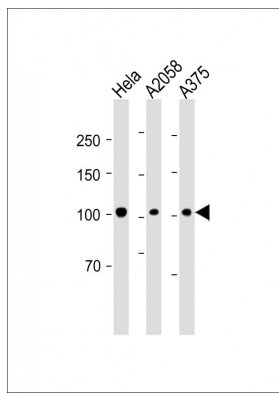
Key regulator of cell-cell adhesion that associates with and regulates the cell adhesion properties of both C-, E- and N-cadherins, being critical for their surface stability (PubMed:[14610055](#), PubMed:[20371349](#)). Beside cell-cell adhesion, regulates gene transcription through several transcription factors including ZBTB33/Kaiso2 and GLIS2, and the activity of Rho family GTPases and downstream cytoskeletal dynamics (PubMed:[10207085](#), PubMed:[20371349](#)). Implicated both in cell transformation by SRC and in ligand-induced receptor signaling through the EGF, PDGF, CSF-1 and ERBB2 receptors (PubMed:[17344476](#)).

References

Keirsebilck A.,et al.Genomics 50:129-146(1998).
Nagase T.,et al.DNA Res. 4:141-150(1997).
Ota T.,et al.Nat. Genet. 36:40-45(2004).
Taylor T.D.,et al.Nature 440:497-500(2006).
Kim L.,et al.Mol. Cell. Biol. 15:4553-4561(1995).

Images

All lanes: Anti-Catenin delta-1 at 1:2000 dilution Lane 1: Hela whole cell lysate Lane 2: A2058 whole cell lysate Lane 3: A375 whole cell lysate Lysates/proteins at 20 µg per lane. Secondary: Goat Anti-Rabbit IgG, (H+L), Peroxidase conjugated (ASP1615) at 1/15000 dilution. Observed band size: 108 KDa Blocking/Dilution buffer: 5% NFDM/TBST.



Please note: All products are 'FOR RESEARCH USE ONLY. NOT FOR USE IN DIAGNOSTIC OR THERAPEUTIC PROCEDURES'.