

# TROP2 antibody

Purified Rabbit Polyclonal Antibody (Pab)

Catalog # AP22444a

## Product Information

---

<b>Application</b>	WB, E
<b>Primary Accession</b>	<a href="#">P09758</a>
<b>Reactivity</b>	Human
<b>Host</b>	Rabbit
<b>Clonality</b>	polyclonal
<b>Isotype</b>	Rabbit Ig
<b>Clone Names</b>	R03185
<b>Calculated MW</b>	35709

## Additional Information

---

<b>Gene ID</b>	4070
<b>Other Names</b>	Tumor-associated calcium signal transducer 2, Cell surface glycoprotein Trop-2, Membrane component chromosome 1 surface marker 1, Pancreatic carcinoma marker protein GA733-1, TACSTD2, GA733-1, M1S1, TROP2
<b>Target/Specificity</b>	This antibody is generated from a rabbit immunized with a KLH conjugated synthetic peptide between amino acids from human.
<b>Dilution</b>	WB~~1:1000 E~~Use at an assay dependent concentration.
<b>Format</b>	Purified polyclonal antibody supplied in PBS with 0.05% (V/V) Proclin 300. This antibody is purified through a protein A column, followed by peptide affinity purification.
<b>Storage</b>	Maintain refrigerated at 2-8°C for up to 2 weeks. For long term storage store at -20°C in small aliquots to prevent freeze-thaw cycles.
<b>Precautions</b>	TROP2 antibody is for research use only and not for use in diagnostic or therapeutic procedures.

## Protein Information

---

<b>Name</b>	TACSTD2
<b>Synonyms</b>	GA733-1, M1S1, TROP2
<b>Function</b>	May function as a growth factor receptor.
<b>Cellular Location</b>	Membrane; Single-pass type I membrane protein.

## Tissue Location

Placenta, pancreatic carcinoma cell lines.

## Background

---

May function as a growth factor receptor.

## References

---

Linnenbach A.J.,et al.Proc. Natl. Acad. Sci. U.S.A. 86:27-31(1989).

Linnenbach A.J.,et al.Mol. Cell. Biol. 13:1507-1515(1993).

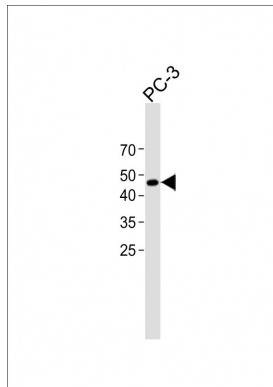
Fornaro M.,et al.Int. J. Cancer 62:610-618(1995).

Kalnine N.,et al.Submitted (MAY-2003) to the EMBL/GenBank/DDBJ databases.

Halleck A.,et al.Submitted (JUN-2004) to the EMBL/GenBank/DDBJ databases.

## Images

---



All lanes: Anti-TROP2 antibody at 1:500 dilution + PC-3 whole cell lysate Lysates/proteins at 20 µg per lane. Secondary: Goat Anti-Rabbit IgG, (H+L), Peroxidase conjugated (ASP1615) at 1/15000 dilution. Observed band size: 45 KDa Blocking/Dilution buffer: 5% NFDm/TBST.

Please note: All products are 'FOR RESEARCH USE ONLY. NOT FOR USE IN DIAGNOSTIC OR THERAPEUTIC PROCEDURES'.