

Neurofilament-L antibody

Purified Rabbit Polyclonal Antibody (Pab)

Catalog # AP22455a

Product Information

Application	WB, E
Primary Accession	P07196
Reactivity	Human, Mouse
Host	Rabbit
Clonality	polyclonal
Isotype	Rabbit Ig
Clone Names	R03354
Calculated MW	61517

Additional Information

Gene ID	4747
Other Names	Neurofilament light polypeptide, NF-L, 68 kDa neurofilament protein, Neurofilament triplet L protein, NEFL, NF68, NFL
Target/Specificity	This antibody is generated from a rabbit immunized with a KLH conjugated synthetic peptide between amino acids from human.
Dilution	WB~~1:2000 E~~Use at an assay dependent concentration.
Format	Purified polyclonal antibody supplied in PBS with 0.05% (V/V) Proclin 300. This antibody is purified through a protein A column, followed by peptide affinity purification.
Storage	Maintain refrigerated at 2-8°C for up to 2 weeks. For long term storage store at -20°C in small aliquots to prevent freeze-thaw cycles.
Precautions	Neurofilament-L antibody is for research use only and not for use in diagnostic or therapeutic procedures.

Protein Information

Name	NEFL
Synonyms	NF68, NFL
Function	Neurofilaments usually contain three intermediate filament proteins: NEFL, NEFM, and NEFH which are involved in the maintenance of neuronal caliber. May additionally cooperate with the neuronal intermediate filament proteins PRPH and INA to form neuronal filamentous networks (By similarity).

Cellular Location

Cell projection, axon {ECO:0000250|UniProtKB:P08551}. Cytoplasm, cytoskeleton {ECO:0000250|UniProtKB:P08551}

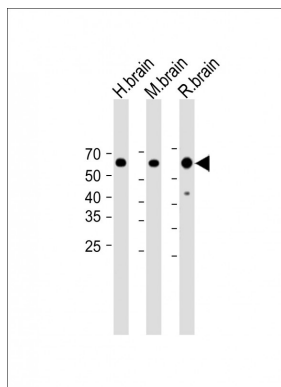
Background

Neurofilaments usually contain three intermediate filament proteins: NEFL, NEFM, and NEFH which are involved in the maintenance of neuronal caliber. May additionally cooperate with the neuronal intermediate filament proteins PRPH and INA to form neuronal filamentous networks (By similarity).

References

Julien J.-P.,et al.Biochim. Biophys. Acta 909:10-20(1987).
Perez-Olle R.,et al.J. Cell Sci. 115:4937-4946(2002).
Nusbaum C.,et al.Nature 439:331-335(2006).
Mural R.J.,et al.Submitted (JUL-2005) to the EMBL/GenBank/DDBJ databases.
Pospelov V.A.,et al.Cell Growth Differ. 5:187-196(1994).

Images



All lanes: Anti-Neurofilament-L antibody at 1:2000 dilution
Lane 1: Human brain lysate
Lane 2: Mouse brain lysate
Lane 3: Rat brain lysate
Lysates/proteins at 20 µg per lane.
Secondary: Goat Anti-Rabbit IgG, (H+L), Peroxidase conjugated (ASP1615) at 1/15000 dilution.
Observed band size: 62 KDa
Blocking/Dilution buffer: 5% NFDM/TBST.

Please note: All products are 'FOR RESEARCH USE ONLY. NOT FOR USE IN DIAGNOSTIC OR THERAPEUTIC PROCEDURES'.