

CTLA4 Antibody

Purified Rabbit Polyclonal Antibody (Pab)

Catalog # AP22463a

Product Information

Application	WB, E
Primary Accession	P16410
Reactivity	Human
Host	Rabbit
Clonality	polyclonal
Isotype	Rabbit Ig
Clone Names	R03183
Calculated MW	24656

Additional Information

Gene ID	1493
Other Names	Cytotoxic T-lymphocyte protein 4, Cytotoxic T-lymphocyte-associated antigen 4, CTLA-4, CD152, CTLA4, CD152
Target/Specificity	This CTLA4 antibody is generated from a rabbit immunized with a KLH conjugated synthetic peptide between amino acids from the human region of human CTLA4.
Dilution	WB~~1:1000 E~~Use at an assay dependent concentration.
Format	Purified polyclonal antibody supplied in PBS with 0.05% (V/V) Proclin 300. This antibody is purified through a protein A column, followed by peptide affinity purification.
Storage	Maintain refrigerated at 2-8°C for up to 2 weeks. For long term storage store at -20°C in small aliquots to prevent freeze-thaw cycles.
Precautions	CTLA4 Antibody is for research use only and not for use in diagnostic or therapeutic procedures.

Protein Information

Name	CTLA4
Synonyms	CD152
Function	Inhibitory receptor acting as a major negative regulator of T-cell responses. The affinity of CTLA4 for its natural B7 family ligands, CD80 and CD86, is considerably stronger than the affinity of their cognate stimulatory coreceptor

CD28.

Cellular Location

Cell membrane; Single-pass type I membrane protein. Note=Exists primarily an intracellular antigen whose surface expression is tightly regulated by restricted trafficking to the cell surface and rapid internalization

Tissue Location

Widely expressed with highest levels in lymphoid tissues. Detected in activated T-cells where expression levels are 30- to 50-fold less than CD28, the stimulatory coreceptor, on the cell surface following activation.

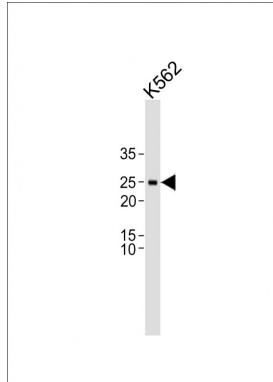
Background

Inhibitory receptor acting as a major negative regulator of T-cell responses. The affinity of CTLA4 for its natural B7 family ligands, CD80 and CD86, is considerably stronger than the affinity of their cognate stimulatory coreceptor CD28.

References

Harper K.,et al.J. Immunol. 147:1037-1044(1991).
Ling V.,et al.Genomics 78:155-168(2001).
Gu M.,et al.Clin. Immunol. 128:374-381(2008).
Wu P.W.,et al.Submitted (AUG-2001) to the EMBL/GenBank/DDBJ databases.
Hillier L.W.,et al.Nature 434:724-731(2005).

Images



All lanes: Anti-CTLA4 Antibody at 1:1000 dilution + K562 whole cell lysate Lysates/proteins at 20 µg per lane.
Secondary: Goat Anti-Rabbit IgG, (H+L), Peroxidase conjugated (ASP1615) at 1/15000 dilution. Observed band size: 25 KDa Blocking/Dilution buffer: 5% NFDM/TBST.

Please note: All products are 'FOR RESEARCH USE ONLY. NOT FOR USE IN DIAGNOSTIC OR THERAPEUTIC PROCEDURES'.