

# Neurofilament-L antibody

Purified Rabbit Polyclonal Antibody (Pab)

Catalog # AP22468a

## Product Information

---

|                          |                        |
|--------------------------|------------------------|
| <b>Application</b>       | WB, E                  |
| <b>Primary Accession</b> | <a href="#">P07196</a> |
| <b>Reactivity</b>        | Human, Mouse           |
| <b>Host</b>              | Rabbit                 |
| <b>Clonality</b>         | polyclonal             |
| <b>Isotype</b>           | Rabbit Ig              |
| <b>Clone Names</b>       | R03356                 |
| <b>Calculated MW</b>     | 61517                  |

## Additional Information

---

|                           |   |
|---------------------------|---|
| <b>Gene ID</b>            | 4747  |
| <b>Other Names</b>        | Neurofilament light polypeptide, NF-L, 68 kDa neurofilament protein, Neurofilament triplet L protein, NEFL, NF68, NFL   |
| <b>Target/Specificity</b> | This antibody is generated from a rabbit immunized with a KLH conjugated synthetic peptide between amino acids from human.  |
| <b>Dilution</b>           | WB~~1:2000 E~~Use at an assay dependent concentration.  |
| <b>Format</b>             | Purified polyclonal antibody supplied in PBS with 0.05% (V/V) Proclin 300. This antibody is purified through a protein A column, followed by peptide affinity purification. |
| <b>Storage</b>            | Maintain refrigerated at 2-8°C for up to 2 weeks. For long term storage store at -20°C in small aliquots to prevent freeze-thaw cycles.                                     |
| <b>Precautions</b>        | Neurofilament-L antibody is for research use only and not for use in diagnostic or therapeutic procedures.  |

## Protein Information

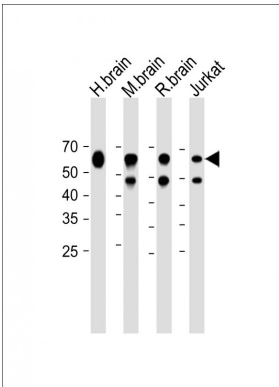
---

|                 |  |
|-----------------|--|
| <b>Name</b>     | NEFL   |
| <b>Synonyms</b> | NF68, NFL  |
| <b>Function</b> | Neurofilaments usually contain three intermediate filament proteins: NEFL, NEFM, and NEFH which are involved in the maintenance of neuronal caliber. May additionally cooperate with the neuronal intermediate filament proteins PRPH and INA to form neuronal filamentous networks (By similarity). |

**Cellular Location**

Cell projection, axon {ECO:0000250|UniProtKB:P08551}. Cytoplasm, cytoskeleton {ECO:0000250|UniProtKB:P08551}

**Images**



All lanes: Anti-Neurofilament-L antibody at 1:2000 dilution Lane 1: Human brain lysate Lane 2: Mouse brain lysate Lane 3: Rat brain lysate Lysates/proteins at 20 µg per lane. Secondary: Goat Anti-Rabbit IgG, (H+L), Peroxidase conjugated (ASP1615) at 1/15000 dilution. Observed band size: 62 KDa Blocking/Dilution buffer: 5% NFDM/TBST.

Please note: All products are 'FOR RESEARCH USE ONLY. NOT FOR USE IN DIAGNOSTIC OR THERAPEUTIC PROCEDURES'.