

ARL5 Antibody (C-term)

Affinity Purified Rabbit Polyclonal Antibody (Pab)

Catalog # AP2308b

Product Information

Application	WB, IHC-P, E
Primary Accession	Q9Y689
Other Accession	P51646 , Q80ZU0 , Q2KJ96 , NP_036229
Reactivity	Human, Mouse
Predicted	Bovine, Rat
Host	Rabbit
Clonality	Polyclonal
Isotype	Rabbit IgG
Clone Names	RB4919
Calculated MW	20728
Antigen Region	152-179

Additional Information

Gene ID	26225
Other Names	ADP-ribosylation factor-like protein 5A, ARL5A, ARFLP5, ARL5
Target/Specificity	This ARL5 antibody is generated from rabbits immunized with a KLH conjugated synthetic peptide between 152-179 amino acids from the C-terminal region of human ARL5.
Dilution	WB~~1:1000 IHC-P~~1:100~500 E~~Use at an assay dependent concentration.
Format	Purified polyclonal antibody supplied in PBS with 0.09% (W/V) sodium azide. This antibody is purified through a protein A column, followed by peptide affinity purification.
Storage	Maintain refrigerated at 2-8°C for up to 2 weeks. For long term storage store at -20°C in small aliquots to prevent freeze-thaw cycles.
Precautions	ARL5 Antibody (C-term) is for research use only and not for use in diagnostic or therapeutic procedures.

Protein Information

Name	ARL5A
Synonyms	ARFLP5, ARL5
Function	Lacks ADP-ribosylation enhancing activity.

Background

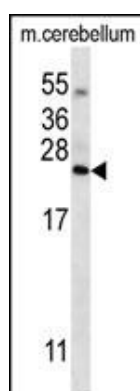
ARL5 belongs to the ARF family of GTP-binding proteins. With its distinctive nuclear/nucleolar localization and interaction with HP1alpha, the protein is developmentally regulated and may play a role(s) in nuclear dynamics and/or signaling cascades during embryonic development. Alternative splicing occurs at this locus and two transcript variants encoding distinct isoforms have been identified.

References

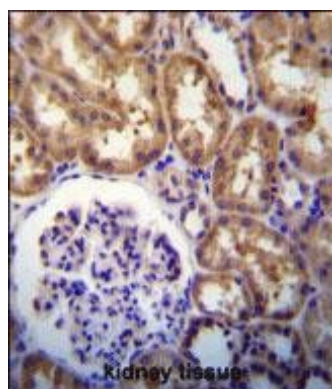
Lin, C.Y., et al., J. Cell. Sci. 115 (Pt 23), 4433-4445 (2002).

He, H., et al., Gene Expr. 10 (5-6), 231-242 (2002).

Images



ARL5 Antibody (C165) (Cat. #AP2308b) western blot analysis in mouse cerebellum tissue lysates (35ug/lane). This demonstrates the ARL5 antibody detected the ARL5 protein (arrow).



ARL5 Antibody (C-term) (Cat. #AP2308b) immunohistochemistry analysis in formalin fixed and paraffin embedded human kidney tissue followed by peroxidase conjugation of the secondary antibody and DAB staining. This data demonstrates the use of ARL5 Antibody (C-term) for immunohistochemistry. Clinical relevance has not been evaluated.

Citations

- [microRNA-202-3p inhibits cell proliferation by targeting ADP-ribosylation factor-like 5A in human colorectal carcinoma.](#)

Please note: All products are 'FOR RESEARCH USE ONLY. NOT FOR USE IN DIAGNOSTIC OR THERAPEUTIC PROCEDURES'.