

TPST2 Antibody (C-term)

Purified Rabbit Polyclonal Antibody (Pab)

Catalog # AP2322b

Product Information

Application	WB, E
Primary Accession	O60704
Other Accession	Q4R863 , NP_003586
Reactivity	Human
Predicted	Monkey
Host	Rabbit
Clonality	Polyclonal
Isotype	Rabbit IgG
Clone Names	RB4954
Calculated MW	41912
Antigen Region	328-358

Additional Information

Gene ID	8459
Other Names	Protein-tyrosine sulfotransferase 2, Tyrosylprotein sulfotransferase 2, TPST-2, TPST2
Target/Specificity	This TPST2 antibody is generated from rabbits immunized with a KLH conjugated synthetic peptide between 328-358 amino acids from the C-terminal region of human TPST2.
Dilution	WB~~1:1000 E~~Use at an assay dependent concentration.
Format	Purified polyclonal antibody supplied in PBS with 0.09% (W/V) sodium azide. This antibody is prepared by Saturated Ammonium Sulfate (SAS) precipitation followed by dialysis against PBS.
Storage	Maintain refrigerated at 2-8°C for up to 2 weeks. For long term storage store at -20°C in small aliquots to prevent freeze-thaw cycles.
Precautions	TPST2 Antibody (C-term) is for research use only and not for use in diagnostic or therapeutic procedures.

Protein Information

Name	TPST2
Function	Catalyzes the O-sulfation of tyrosine residues within acidic motifs of polypeptides, using 3'-phosphoadenylyl sulfate (PAPS) as cosubstrate.

Cellular Location	Golgi apparatus membrane; Single-pass type II membrane protein
Tissue Location	Widely expressed.

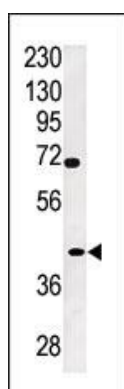
Background

The ADP-ribosylation factor (Arf) family are highly conserved members of the Ras superfamily of regulatory GTP-binding proteins. Arf proteins participate in routing of intracellular proteins to and within the Golgi complex. Cellular functions include maintenance of organelle integrity, coat protein assembly, as an activator of phospholipase D. The Arf family is divided functionally into the Arf and the Arf-like (Arl) proteins. The ARF proteins are categorized as class I (ARF1, ARF2, and ARF3), class II (ARF4 and ARF5) and class III (ARF6) and members of each class share a common gene organization.

References

Strausberg, R.L., et al., Proc. Natl. Acad. Sci. U.S.A. 99(26):16899-16903 (2002).
Wiemann, S., et al., Genome Res. 11(3):422-435 (2001).
Dunham, I., et al., Nature 402(6761):489-495 (1999).
Ouyang, Y.B., et al., J. Biol. Chem. 273(38):24770-24774 (1998).
Beisswanger, R., et al., Proc. Natl. Acad. Sci. U.S.A. 95(19):11134-11139 (1998).

Images



Western blot analysis of anti-TPST2 Pab (Cat. #AP2322b) in A2058 cell line lysate (35ug/lane). TPST2(arrow) was detected using the purified Pab.

Please note: All products are 'FOR RESEARCH USE ONLY. NOT FOR USE IN DIAGNOSTIC OR THERAPEUTIC PROCEDURES'.