

CPT1B Antibody (C-term)

Purified Rabbit Polyclonal Antibody (Pab)

Catalog # AP2532b

Product Information

| | |
|--------------------------|---------------------------|
| Application | WB, IHC-P, E |
| Primary Accession | Q92523 |
| Other Accession | NP_004368 |
| Reactivity | Human |
| Host | Rabbit |
| Clonality | Polyclonal |
| Isotype | Rabbit IgG |
| Clone Names | RB4661/4662 |
| Calculated MW | 87801 |
| Antigen Region | 606-637 |

Additional Information

| | |
|---------------------------|--|
| Gene ID | 1375 |
| Other Names | Carnitine O-palmitoyltransferase 1, muscle isoform, CPT1-M, Carnitine O-palmitoyltransferase I, muscle isoform, CPT I, CPTI-M, Carnitine palmitoyltransferase 1B, Carnitine palmitoyltransferase I-like protein, CPT1B, KIAA1670 |
| Target/Specificity | This CPT1B antibody is generated from rabbits immunized with a KLH conjugated synthetic peptide between 606-637 amino acids from the C-terminal region of human CPT1B. |
| Dilution | WB~~1:1000 IHC-P~~1:100~500 E~~Use at an assay dependent concentration. |
| Format | Purified polyclonal antibody supplied in PBS with 0.09% (W/V) sodium azide. This antibody is prepared by Saturated Ammonium Sulfate (SAS) precipitation followed by dialysis against PBS. |
| Storage | Maintain refrigerated at 2-8°C for up to 2 weeks. For long term storage store at -20°C in small aliquots to prevent freeze-thaw cycles. |
| Precautions | CPT1B Antibody (C-term) is for research use only and not for use in diagnostic or therapeutic procedures. |

Protein Information

| | |
|-----------------|----------|
| Name | CPT1B |
| Synonyms | KIAA1670 |

| | |
|--------------------------|---|
| Function | Catalyzes the transfer of the acyl group of long-chain fatty acid-CoA conjugates onto carnitine, an essential step for the mitochondrial uptake of long-chain fatty acids and their subsequent beta-oxidation in the mitochondrion. |
| Cellular Location | Mitochondrion outer membrane; Multi-pass membrane protein |
| Tissue Location | Strong expression in heart and skeletal muscle. No expression in liver and kidney |

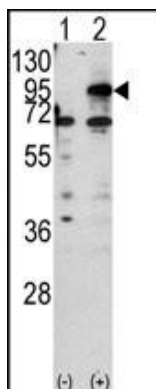
Background

CPT1B is a member of the carnitine/choline acetyltransferase family, and is the rate-controlling enzyme of the long-chain fatty acid beta-oxidation pathway in muscle mitochondria. This enzyme is required for the net transport of long-chain fatty acyl-CoAs from the cytoplasm into the mitochondria.

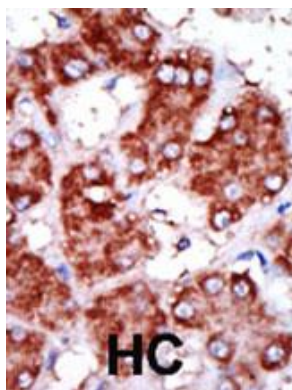
References

Dai, J., et al., Biochem. Biophys. Res. Commun. 301(3):758-763 (2003).
van der Leij, F.R., et al., J. Biol. Chem. 277(30):26994-27005 (2002).
Hirosawa, M., et al., DNA Res. 8(1):1-9 (2001).
Yamazaki, N., et al., J. Biol. Chem. 275(41):31739-31746 (2000).
Britton, C.H., et al., Genomics 40(1):209-211 (1997).

Images



Western blot analysis of CPT1B (arrow) using rabbit polyclonal CPT1B Antibody (C-term) (Cat.#AP2532b). 293 cell lysates (2 ug/lane) either nontransfected (Lane 1) or transiently transfected with the CPT1B gene (Lane 2).



Formalin-fixed and paraffin-embedded human cancer tissue reacted with the primary antibody, which was peroxidase-conjugated to the secondary antibody, followed by DAB staining. This data demonstrates the use of this antibody for immunohistochemistry; clinical relevance has not been evaluated. BC = breast carcinoma; HC = hepatocarcinoma.

Please note: All products are 'FOR RESEARCH USE ONLY. NOT FOR USE IN DIAGNOSTIC OR THERAPEUTIC PROCEDURES'.