

ICMT (C-term) Antibody

Purified Rabbit Polyclonal Antibody (Pab)

Catalog # AP2543b

Product Information

Application	WB, E
Primary Accession	O60725
Reactivity	Human
Host	Rabbit
Clonality	Polyclonal
Isotype	Rabbit IgG
Clone Names	RB8035
Calculated MW	31938
Antigen Region	250-284

Additional Information

Gene ID	23463
Other Names	Protein-S-isoprenylcysteine O-methyltransferase, Isoprenylcysteine carboxylmethyltransferase, Prenylated protein carboxyl methyltransferase, PPMT, Prenylcysteine carboxyl methyltransferase, pcCMT, ICMT, PCCMT
Target/Specificity	This ICMT antibody is generated from rabbits immunized with a KLH conjugated synthetic peptide between 250-284 amino acids from the C-terminal region of human ICMT.
Dilution	WB~~1:1000 E~~Use at an assay dependent concentration.
Format	Purified polyclonal antibody supplied in PBS with 0.09% (W/V) sodium azide. This antibody is prepared by Saturated Ammonium Sulfate (SAS) precipitation followed by dialysis against PBS.
Storage	Maintain refrigerated at 2-8°C for up to 2 weeks. For long term storage store at -20°C in small aliquots to prevent freeze-thaw cycles.
Precautions	ICMT (C-term) Antibody is for research use only and not for use in diagnostic or therapeutic procedures.

Protein Information

Name	ICMT
Synonyms	PCCMT
Function	Catalyzes the post-translational methylation of isoprenylated C-terminal

cysteine residues.

Cellular Location

Endoplasmic reticulum membrane; Multi-pass membrane protein

Tissue Location

Ubiquitously expressed. Expressed at higher levels in the cerebellum and putamen than in other brain regions. Abundant expression seen in the Purkinje cells and pontine neurons

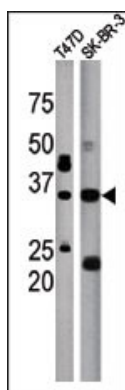
Background

This gene encodes the third of three enzymes that posttranslationally modify isoprenylated C-terminal cysteine residues in certain proteins and target those proteins to the cell membrane. This enzyme localizes to the endoplasmic reticulum. Alternative splicing results in two transcript variants encoding different isoforms.

References

Bergo, M.O., et al., J. Clin. Invest. 113(4):539-550 (2004).
Ahmad, M., et al., Arterioscler. Thromb. Vasc. Biol. 22(5):759-764 (2002).
Van Dessel, G.A., et al., Int. J. Biochem. Cell Biol. 34(5):477-486 (2002).
Dai, Q., et al., J. Biol. Chem. 273(24):15030-15034 (1998).

Images



The anti-ICMT Pab (Cat. #AP2543b) is used in Western blot to detect ICMT in T47D (left) and SK-BR-3 (right) tissue lysate

Please note: All products are 'FOR RESEARCH USE ONLY. NOT FOR USE IN DIAGNOSTIC OR THERAPEUTIC PROCEDURES'.