

PHB1 Antibody (C-term)

Affinity Purified Rabbit Polyclonal Antibody (Pab)

Catalog # AP2710b

Product Information

Application	WB, E
Primary Accession	P35232
Other Accession	P67779 , P67778 , Q3T165
Reactivity	Human
Predicted	Bovine, Mouse, Rat
Host	Rabbit
Clonality	Polyclonal
Isotype	Rabbit IgG
Clone Names	RB10627
Calculated MW	29804
Antigen Region	182-211

Additional Information

Gene ID	5245
Other Names	Prohibitin, PHB
Target/Specificity	This PHB1 antibody is generated from rabbits immunized with a KLH conjugated synthetic peptide between 182-211 amino acids from the C-terminal region of human PHB1.
Dilution	WB~~1:1000 E~~Use at an assay dependent concentration.
Format	Purified polyclonal antibody supplied in PBS with 0.09% (W/V) sodium azide. This antibody is purified through a protein A column, followed by peptide affinity purification.
Storage	Maintain refrigerated at 2-8°C for up to 2 weeks. For long term storage store at -20°C in small aliquots to prevent freeze-thaw cycles.
Precautions	PHB1 Antibody (C-term) is for research use only and not for use in diagnostic or therapeutic procedures.

Protein Information

Name	PHB1 {ECO:0000303 PubMed:28017329, ECO:0000312 HGNC:HGNC:8912}
Function	Protein with pleiotropic attributes mediated in a cell- compartment- and tissue-specific manner, which include the plasma membrane-associated cell signaling functions, mitochondrial chaperone, and transcriptional

co-regulator of transcription factors in the nucleus (PubMed:[11302691](#), PubMed:[20959514](#), PubMed:[28017329](#), PubMed:[31522117](#)). Plays a role in adipose tissue and glucose homeostasis in a sex-specific manner (By similarity). Contributes to pulmonary vascular remodeling by accelerating proliferation of pulmonary arterial smooth muscle cells (By similarity).

Cellular Location

Mitochondrion inner membrane. Nucleus. Cytoplasm. Cell membrane

Tissue Location

Widely expressed in different tissues.

Background

Prohibitin is an evolutionarily conserved protein that is ubiquitously expressed. It is thought to be a negative regulator of cell proliferation and may be a tumor suppressor. Mutations have been linked to sporadic breast cancer. Prohibitin is expressed as two transcripts with varying lengths of 3' untranslated region.

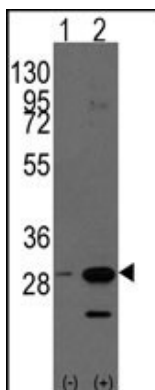
References

Gregory-Bass,R.C., Int. J. Cancer 122 (9), 1923-1930 (2008)

Ross,J.A., J. Biol. Chem. 283 (8), 4699-4713 (2008)

White,J.J., Genomics 11 (1), 228-230 (1991)

Images



Western blot analysis of PHB1 (arrow) using rabbit polyclonal PHB1 Antibody (Human C-term) (Cat.#AP2710b). 293 cell lysates (2 ug/lane) either nontransfected (Lane 1) or transiently transfected with the PHB1 gene (Lane 2) (Origene Technologies).

Please note: All products are 'FOR RESEARCH USE ONLY. NOT FOR USE IN DIAGNOSTIC OR THERAPEUTIC PROCEDURES'.