

Arhgef9 Antibody (Center)

Affinity Purified Rabbit Polyclonal Antibody (Pab)

Catalog # AP2713c

Product Information

Application	IHC-P, WB, E
Primary Accession	Q9QX73
Other Accession	Q3UTH8 , Q43307 , Q58DL7
Reactivity	Rat
Predicted	Bovine, Mouse
Host	Rabbit
Clonality	Polyclonal
Isotype	Rabbit IgG
Clone Names	RB9122
Calculated MW	58157
Antigen Region	274-303

Additional Information

Gene ID	66013
Other Names	Rho guanine nucleotide exchange factor 9, Collybistin, Rac/Cdc42 guanine nucleotide exchange factor 9, Arhgef9
Target/Specificity	This Arhgef9 antibody is generated from rabbits immunized with a KLH conjugated synthetic peptide between 274-303 amino acids from the Central region of human Arhgef9.
Dilution	IHC-P~~1:100~500 WB~~1:1000 E~~Use at an assay dependent concentration.
Format	Purified polyclonal antibody supplied in PBS with 0.09% (W/V) sodium azide. This antibody is purified through a protein A column, followed by peptide affinity purification.
Storage	Maintain refrigerated at 2-8°C for up to 2 weeks. For long term storage store at -20°C in small aliquots to prevent freeze-thaw cycles.
Precautions	Arhgef9 Antibody (Center) is for research use only and not for use in diagnostic or therapeutic procedures.

Protein Information

Name	Arhgef9
Function	Acts as a guanine nucleotide exchange factor (GEF) for CDC42. Promotes formation of GPHN clusters.

Cellular Location

Cytoplasm. Postsynaptic density {ECO:0000250|UniProtKB:Q3UTH8}

Tissue Location

Detected in brain, throughout the gray matter. Detected at low levels in heart and skeletal muscle

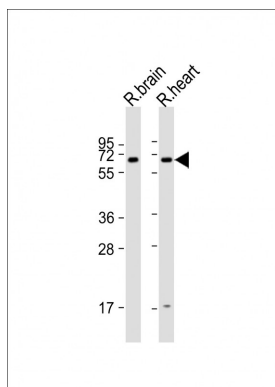
Background

ARHGEF9 belongs to a family of Rho-like GTPases that act as molecular switches by cycling from the active GTP-bound state to the inactive GDP-bound state. These proteins are key regulators of the actin cytoskeleton and are involved in cell signaling.

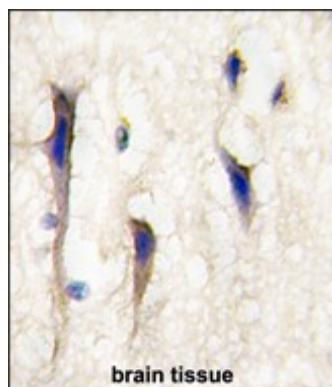
References

Xiang,S., J. Mol. Biol. 359 (1), 35-46 (2006)
Harvey,K., J. Neurosci. 24 (25), 5816-5826 (2004)
Grosskreutz,Y., Biol. Chem. 382 (10), 1455-1462 (2001)
Kins,S., Nat. Neurosci. 3 (1), 22-29 (2000)

Images



All lanes : Anti-Collybistin(Arhgef9) (Center) at 1:1000 dilution
Lane 1: rat brain lysate Lane 2: rat heart lysate
Lysates/proteins at 20 µg per lane. Secondary Goat Anti-Rabbit IgG, (H+L), Peroxidase conjugated at 1/10000 dilution. Predicted band size : 58 kDa
Blocking/Dilution buffer: 5% NFDM/TBST.



Formalin-fixed and paraffin-embedded human brain tissue reacted with Arhgef9 Antibody (Center) (Cat.#AP2713c), which was peroxidase-conjugated to the secondary antibody, followed by DAB staining. This data demonstrates the use of this antibody for immunohistochemistry; clinical relevance has not been evaluated.

Please note: All products are 'FOR RESEARCH USE ONLY. NOT FOR USE IN DIAGNOSTIC OR THERAPEUTIC PROCEDURES'.