

# Olfm1 Antibody (N-term)

Purified Rabbit Polyclonal Antibody (Pab)

Catalog # AP2719a

## Product Information

---

<b>Application</b>	WB, IHC-P, E
<b>Primary Accession</b>	<a href="#">Q99784</a>
<b>Other Accession</b>	<a href="#">Q62609</a> , <a href="#">O88998</a> , <a href="#">Q9IAK4</a>
<b>Reactivity</b>	Human
<b>Predicted</b>	Mouse, Rat, Chicken
<b>Host</b>	Rabbit
<b>Clonality</b>	Polyclonal
<b>Isotype</b>	Rabbit IgG
<b>Calculated MW</b>	55343
<b>Antigen Region</b>	71-100

## Additional Information

---

<b>Gene ID</b>	10439
<b>Other Names</b>	Noelin, Neuronal olfactomedin-related ER localized protein, Olfactomedin-1, OLFM1, NOE1, NOEL1
<b>Target/Specificity</b>	This Olfm1 antibody is generated from rabbits immunized with a KLH conjugated synthetic peptide between 71-100 amino acids from the N-terminal region of human Olfm1.
<b>Dilution</b>	WB~~1:2000 IHC-P~~1:100~500 E~~Use at an assay dependent concentration.
<b>Format</b>	Purified monoclonal antibody supplied in PBS with 0.09% (W/V) sodium azide. This antibody is purified through a protein G column, followed by dialysis against PBS.
<b>Storage</b>	Maintain refrigerated at 2-8°C for up to 2 weeks. For long term storage store at -20°C in small aliquots to prevent freeze-thaw cycles.
<b>Precautions</b>	Olfm1 Antibody (N-term) is for research use only and not for use in diagnostic or therapeutic procedures.

## Protein Information

---

<b>Name</b>	OLFM1
<b>Synonyms</b>	NOE1, NOEL1
<b>Function</b>	Contributes to the regulation of axonal growth in the embryonic and adult

central nervous system by inhibiting interactions between RTN4R and LINGO1. Inhibits RTN4R-mediated axon growth cone collapse (By similarity). May play an important role in regulating the production of neural crest cells by the neural tube (By similarity). May be required for normal responses to olfactory stimuli (By similarity).

#### Cellular Location

Secreted {ECO:0000250|UniProtKB:O88998}. Synapse {ECO:0000250|UniProtKB:O88998}. Endoplasmic reticulum {ECO:0000250|UniProtKB:O88998}. Cell projection, axon {ECO:0000250|UniProtKB:O88998}. Perikaryon {ECO:0000250|UniProtKB:O88998}

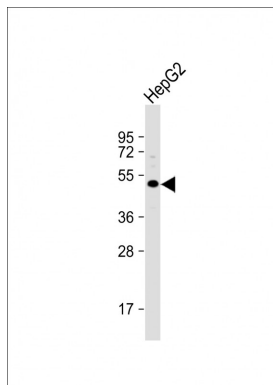
## Background

Olfm1 shares extensive sequence similarity with the rat neuronal olfactomedin-related ER localized protein. While the exact function of this protein is not known, its abundant expression in brain suggests that it may have an essential role in nerve tissue.

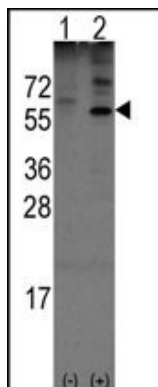
## References

Yokoyama M., DNA Res. 3:311-320(1996).  
Yu W., Genome Res. 7:353-358(1997).  
Liu T., J. Proteome Res. 4:2070-2080(2005).

## Images

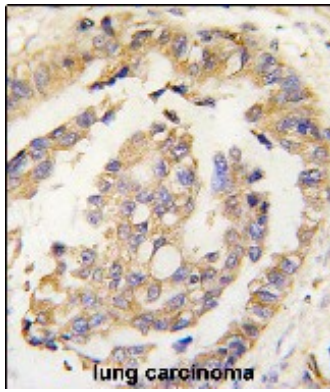


Anti-Noelin-1(Olfm1) (N-term) at 1:1000 dilution + HepG2 whole cell lysate. Lysates/proteins at 20 µg per lane. Secondary Goat Anti-Rabbit IgG, (H+L), Peroxidase conjugated at 1/10000 dilution. Predicted band size : 55 kDa. Blocking/Dilution buffer: 5% NFDM/TBST.



Western blot analysis of Noelin-1(Olfm1) (arrow) using rabbit polyclonal Noelin-1(Olfm1) Antibody (N-term) (Cat.#AP2719a). 293 cell lysates (2 ug/lane) either nontransfected (Lane 1) or transiently transfected with the Noelin-1(Olfm1) gene (Lane 2) (Origene Technologies).

Formalin-fixed and paraffin-embedded human lung carcinoma tissue reacted with Olfm1 Antibody (N-term) (Cat.#AP2719a), which was peroxidase-conjugated to the secondary antibody, followed by DAB staining. This data demonstrates the use of this antibody for



immunohistochemistry; clinical relevance has not been evaluated.

## Citations

---

- [Olfactomedin 1 negatively regulates NF- \$\kappa\$ B signalling and suppresses the growth and metastasis of colorectal cancer cells.](#)
- [Development of autoantibody signatures as novel diagnostic biomarkers of non-small cell lung cancer.](#)

Please note: All products are 'FOR RESEARCH USE ONLY. NOT FOR USE IN DIAGNOSTIC OR THERAPEUTIC PROCEDURES'.