

PHPT1 Antibody(C-term)

Affinity Purified Rabbit Polyclonal Antibody (Pab)

Catalog # AP2721b

Product Information

| | |
|--------------------------|------------------------|
| Application | WB, IHC-P, E |
| Primary Accession | Q9NRX4 |
| Reactivity | Human |
| Host | Rabbit |
| Clonality | Polyclonal |
| Isotype | Rabbit IgG |
| Clone Names | RB10636 |
| Calculated MW | 13833 |
| Antigen Region | 88-117 |

Additional Information

| | |
|---------------------------|---|
| Gene ID | 29085 |
| Other Names | 14 kDa phosphohistidine phosphatase, 313-, Phosphohistidine phosphatase 1, Protein janus-A homolog, PHPT1, PHP14 |
| Target/Specificity | This PHPT1 antibody is generated from rabbits immunized with a KLH conjugated synthetic peptide between 88-117 amino acids from the C-terminal region of human PHPT1. |
| Dilution | WB~~1:1000 IHC-P~~1:100~500 E~~Use at an assay dependent concentration. |
| Format | Purified polyclonal antibody supplied in PBS with 0.05% (V/V) Proclin 300. This antibody is purified through a protein A column, followed by peptide affinity purification. |
| Storage | Maintain refrigerated at 2-8°C for up to 2 weeks. For long term storage store at -20°C in small aliquots to prevent freeze-thaw cycles. |
| Precautions | PHPT1 Antibody(C-term) is for research use only and not for use in diagnostic or therapeutic procedures. |

Protein Information

| | |
|-----------------|---|
| Name | PHPT1 |
| Synonyms | PHP14 |
| Function | Exhibits phosphohistidine phosphatase activity. |

Cellular Location

Cytoplasm.

Tissue Location

Expressed abundantly in heart and skeletal muscle.

Background

PHPT1 is an EDTA-insensitive phosphohistidine phosphatase that catalyzes the dephosphorylation of phosphopeptide I (Ek et al., 2002 [PubMed 12383260]).[supplied by OMIM].

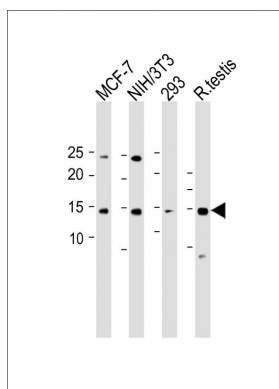
References

Lim,J., Cell 125 (4), 801-814 (2006)

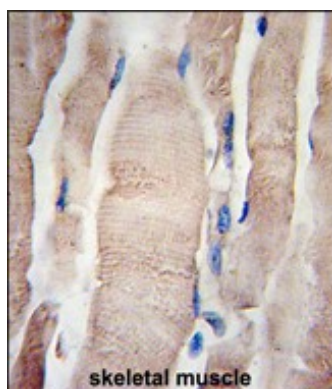
Mehrle,A., Nucleic Acids Res. 34 (DATABASE ISSUE), D415-D418 (2006)

Ma,R.,Biochem. Biophys. Res. Commun. 337 (3), 887-891 (2005)

Images



All lanes: Anti-PHPT1 Antibody(C-term) at 1:1000 dilution
Lane 1: MCF-7 whole cell lysate Lane 2: NIH/3T3 whole cell lysate Lane 3: 293 whole cell lysate Lane 4: Rat testis lysate
Lysates/proteins at 20 µg per lane. Secondary: Goat Anti-Rabbit IgG, (H+L), Peroxidase conjugated (ASP1615) at 1/15000 dilution. Observed band size: 13. 8 KDa
Blocking/Dilution buffer: 5% NFDM/TBST.



Formalin-fixed and paraffin-embedded human skeletal muscle tissue reacted with PHPT1 Antibody (N-term) (Cat.#AP2721b), which was peroxidase-conjugated to the secondary antibody, followed by DAB staining. This data demonstrates the use of this antibody for immunohistochemistry; clinical relevance has not been evaluated.

Please note: All products are 'FOR RESEARCH USE ONLY. NOT FOR USE IN DIAGNOSTIC OR THERAPEUTIC PROCEDURES'.