

ZIC4 Antibody (C-term)

Affinity Purified Rabbit Polyclonal Antibody (Pab)

Catalog # AP2722b

Product Information

Application	WB, E
Primary Accession	Q8N9L1
Reactivity	Human
Host	Rabbit
Clonality	Polyclonal
Isotype	Rabbit IgG
Clone Names	RB10545
Calculated MW	36567
Antigen Region	299-334

Additional Information

Gene ID	84107
Other Names	Zinc finger protein ZIC 4, Zinc finger protein of the cerebellum 4, ZIC4
Target/Specificity	This ZIC4 antibody is generated from rabbits immunized with a KLH conjugated synthetic peptide between 299-334 amino acids from the C-terminal region of human ZIC4.
Dilution	WB~~1:1000 E~~Use at an assay dependent concentration.
Format	Purified polyclonal antibody supplied in PBS with 0.09% (W/V) sodium azide. This antibody is purified through a protein A column, followed by peptide affinity purification.
Storage	Maintain refrigerated at 2-8°C for up to 2 weeks. For long term storage store at -20°C in small aliquots to prevent freeze-thaw cycles.
Precautions	ZIC4 Antibody (C-term) is for research use only and not for use in diagnostic or therapeutic procedures.

Protein Information

Name	ZIC4
Function	Binds to DNA.
Cellular Location	Nucleus.

Background

ZIC4 is a member of the ZIC family of C2H2-type zinc finger proteins. Members of this family are important during development, and have been associated with X-linked visceral heterotaxy and holoprosencephaly type 5.

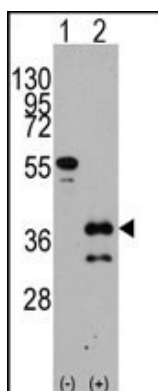
References

Ishiguro,A., Biochem. Biophys. Res. Commun. 324 (1), 302-307 (2004)

Grinberg,I., Nat. Genet. 36 (10), 1053-1055 (2004)

Aruga,J., Gene 172 (2), 291-294 (1996)

Images



Western blot analysis of ZIC4 (arrow) using rabbit polyclonal ZIC4 Antibody (C-term) (Cat.#AP2722b). 293 cell lysates (2 ug/lane) either nontransfected (Lane 1) or transiently transfected with the ZIC4 gene (Lane 2) (Origene Technologies).

Please note: All products are 'FOR RESEARCH USE ONLY. NOT FOR USE IN DIAGNOSTIC OR THERAPEUTIC PROCEDURES'.