

# Desmin Antibody (T16)

Affinity Purified Rabbit Polyclonal Antibody (Pab)

Catalog # AP2751a

## Product Information

---

<b>Application</b>	WB, IHC-P, E
<b>Primary Accession</b>	<a href="#">P17661</a>
<b>Other Accession</b>	<a href="#">P48675</a> , <a href="#">P02540</a> , <a href="#">P31001</a> , <a href="#">O62654</a>
<b>Reactivity</b>	Human
<b>Predicted</b>	Bovine, Mouse, Pig, Rat
<b>Host</b>	Rabbit
<b>Clonality</b>	Polyclonal
<b>Isotype</b>	Rabbit IgG
<b>Clone Names</b>	RB15195
<b>Calculated MW</b>	53536
<b>Antigen Region</b>	1-30

## Additional Information

---

<b>Gene ID</b>	1674
<b>Other Names</b>	Desmin, DES
<b>Target/Specificity</b>	This Desmin antibody is generated from rabbits immunized with a KLH conjugated synthetic peptide between 1-30 amino acids from human Desmin.
<b>Dilution</b>	WB~~1:1000 IHC-P~~1:100~500 E~~Use at an assay dependent concentration.
<b>Format</b>	Purified polyclonal antibody supplied in PBS with 0.05% (V/V) Proclin 300. This antibody is purified through a protein A column, followed by peptide affinity purification.
<b>Storage</b>	Maintain refrigerated at 2-8°C for up to 2 weeks. For long term storage store at -20°C in small aliquots to prevent freeze-thaw cycles.
<b>Precautions</b>	Desmin Antibody (T16) is for research use only and not for use in diagnostic or therapeutic procedures.

## Protein Information

---

<b>Name</b>	DES
<b>Function</b>	Muscle-specific type III intermediate filament essential for proper muscular structure and function. Plays a crucial role in maintaining the structure of sarcomeres, inter-connecting the Z-disks and forming the myofibrils, linking them not only to the sarcolemmal cytoskeleton, but also to the nucleus and

mitochondria, thus providing strength for the muscle fiber during activity (PubMed:[25358400](#)). In adult striated muscle they form a fibrous network connecting myofibrils to each other and to the plasma membrane from the periphery of the Z- line structures (PubMed:[24200904](#), PubMed:[25394388](#), PubMed:[26724190](#)). May act as a sarcomeric microtubule-anchoring protein: specifically associates with deetyrosinated tubulin-alpha chains, leading to buckled microtubules and mechanical resistance to contraction. Required for nuclear membrane integrity, via anchoring at the cell tip and nuclear envelope, resulting in maintenance of microtubule-derived intracellular mechanical forces (By similarity). Contributes to the transcriptional regulation of the NKX2-5 gene in cardiac progenitor cells during a short period of cardiomyogenesis and in cardiac side population stem cells in the adult. Plays a role in maintaining an optimal conformation of nebulin (NEB) on heart muscle sarcomeres to bind and recruit cardiac alpha-actin (By similarity).

### Cellular Location

Cytoplasm, myofibril, sarcomere, Z line. Cytoplasm Cell membrane, sarcolemma. Nucleus {ECO:0000250|UniProtKB:P31001}. Cell tip {ECO:0000250|UniProtKB:P31001}. Nucleus envelope {ECO:0000250|UniProtKB:P31001}. Note=Localizes in the intercalated disks which occur at the Z line of cardiomyocytes (PubMed:24200904, PubMed:26724190). Localizes in the nucleus exclusively in differentiating cardiac progenitor cells and premature cardiomyocytes (By similarity). PKP2 is required for correct anchoring of DES at the cell tip and nuclear envelope (By similarity) {ECO:0000250|UniProtKB:P31001, ECO:0000269|PubMed:24200904, ECO:0000269|PubMed:26724190}

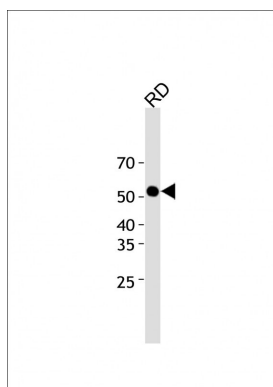
## Background

Desmin is a muscle-specific class III intermediate filament. Homopolymers of this protein form a stable intracytoplasmic filamentous network connecting myofibrils to each other and to the plasma membrane. Mutations in the gene encoding desmin are associated with desmin-related myopathy, a familial cardiac and skeletal myopathy (CSM), and with distal myopathies.

## References

Ariza,A., Hum. Pathol. 26 (9), 1032-1037 (1995)  
Li,Z.L., Gene 78 (2), 243-254 (1989)

## Images



All lanes: Anti-Desmin Antibody at 1:2000 dilution + RD whole cell lysate Lysates/proteins at 20 µg per lane. Secondary: Goat Anti-Rabbit IgG, (H+L), Peroxidase conjugated (ASP1615) at 1/15000 dilution. Observed band size: 54 KDa Blocking/Dilution buffer: 5% NFDm/TBST.

Please note: All products are 'FOR RESEARCH USE ONLY. NOT FOR USE IN DIAGNOSTIC OR THERAPEUTIC PROCEDURES'.