

# TAL1 Antibody (T90)

Affinity Purified Rabbit Polyclonal Antibody (Pab)

Catalog # AP2754A

## Product Information

---

<b>Application</b>	IHC-P-Leica, WB, E
<b>Primary Accession</b>	<a href="#">P17542</a>
<b>Reactivity</b>	Human, Mouse
<b>Host</b>	Rabbit
<b>Clonality</b>	Polyclonal
<b>Isotype</b>	Rabbit IgG
<b>Clone Names</b>	RB15312
<b>Calculated MW</b>	34271
<b>Antigen Region</b>	68-97

## Additional Information

---

<b>Gene ID</b>	6886
<b>Other Names</b>	T-cell acute lymphocytic leukemia protein 1, TAL-1, Class A basic helix-loop-helix protein 17, bHLHa17, Stem cell protein, T-cell leukemia/lymphoma protein 5, TAL1, BHLHA17, SCL, TCL5
<b>Target/Specificity</b>	This TAL1 antibody is generated from rabbits immunized with a KLH conjugated synthetic peptide between 68-97 amino acids from human TAL1.
<b>Dilution</b>	IHC-P-Leica~~1:500 WB~~1:1000 E~~Use at an assay dependent concentration.
<b>Format</b>	Purified polyclonal antibody supplied in PBS with 0.09% (W/V) sodium azide. This antibody is purified through a protein A column, followed by peptide affinity purification.
<b>Storage</b>	Maintain refrigerated at 2-8°C for up to 2 weeks. For long term storage store at -20°C in small aliquots to prevent freeze-thaw cycles.
<b>Precautions</b>	TAL1 Antibody (T90) is for research use only and not for use in diagnostic or therapeutic procedures.

## Protein Information

---

<b>Name</b>	TAL1
<b>Synonyms</b>	BHLHA17, SCL, TCL5
<b>Function</b>	Implicated in the genesis of hemopoietic malignancies. It may play an

important role in hemopoietic differentiation. Serves as a positive regulator of erythroid differentiation (By similarity).

**Cellular Location**

Nucleus {ECO:0000255 | PROSITE-ProRule:PRU00981}.

**Tissue Location**

Leukemic stem cell.

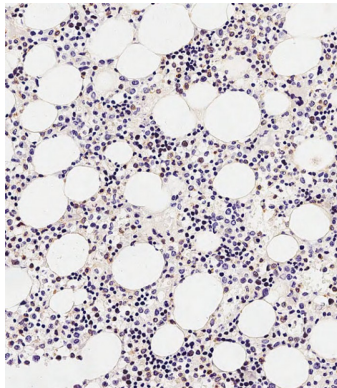
## Background

TAL1 is implicated in the genesis of hemopoietic malignancies. It may play an important role in hemopoietic differentiation. It serves as a positive regulator of erythroid differentiation.

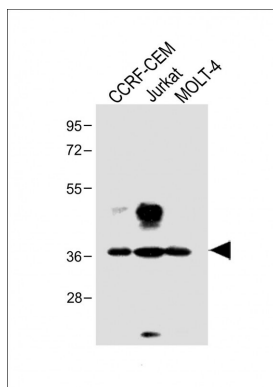
## References

Kassouf,M.T., Blood 112 (4), 1056-1067 (2008)  
Terme,J.M., J. Virol. 82 (16), 7913-7922 (2008)  
Brunet de la Grange,P., Stem Cells 26 (6), 1658-1662 (2008)

## Images



Immunohistochemical analysis of paraffin-embedded Human marrow tissue using AP2754A performed on the Leica® BOND RXm. Tissue was fixed with formaldehyde at room temperature, antigen retrieval was by heat mediation with a EDTA buffer (pH9. 0). Samples were incubated with primary antibody(1:500) for 1 hours at room temperature. A undiluted biotinylated CRF Anti-Polyvalent HRP Polymer antibody was used as the secondary antibody.



All lanes : Anti-TAL1 Antibody (T90) at 1:1000 dilution  
Lane 1: CCRF-CEM whole cell lysate Lane 2: Jurkat whole cell lysate Lane 3: MOLT-4 whole cell lysate  
Lysates/proteins at 20 µg per lane. Secondary Goat Anti-Rabbit IgG, (H+L), Peroxidase conjugated at 1/10000 dilution. Predicted band size : 34 kDa Blocking/Dilution buffer: 5% NFDM/TBST.

Please note: All products are 'FOR RESEARCH USE ONLY. NOT FOR USE IN DIAGNOSTIC OR THERAPEUTIC PROCEDURES'.