

B2M Antibody (N-term)

Purified Rabbit Polyclonal Antibody (Pab)

Catalog # AP2771A

Product Information

Application	FC, IHC-P, WB, E
Primary Accession	P61769
Reactivity	Human
Host	Rabbit
Clonality	Polyclonal
Isotype	Rabbit IgG
Clone Names	RB14679
Calculated MW	13715
Antigen Region	8-39

Additional Information

Gene ID	567
Other Names	Beta-2-microglobulin, Beta-2-microglobulin form pI 53, B2M
Target/Specificity	This B2M antibody is generated from rabbits immunized with a KLH conjugated synthetic peptide between 8-39 amino acids from the N-terminal region of human B2M.
Dilution	FC~~1:10~50 IHC-P~~1:100~500 WB~~1:1000 E~~Use at an assay dependent concentration.
Format	Purified polyclonal antibody supplied in PBS with 0.09% (W/V) sodium azide. This antibody is prepared by Saturated Ammonium Sulfate (SAS) precipitation followed by dialysis against PBS.
Storage	Maintain refrigerated at 2-8°C for up to 2 weeks. For long term storage store at -20°C in small aliquots to prevent freeze-thaw cycles.
Precautions	B2M Antibody (N-term) is for research use only and not for use in diagnostic or therapeutic procedures.

Protein Information

Name	B2M (HGNC:914)
Function	Component of the class I major histocompatibility complex (MHC). Involved in the presentation of peptide antigens to the immune system. Exogenously applied M.tuberculosis EsxA or EsxA-EsxB (or EsxA expressed in host) binds B2M and decreases its export to the cell surface (total protein levels do not

change), probably leading to defects in class I antigen presentation (PubMed:[25356553](#)).

Cellular Location

Secreted. Cell surface. Note=Detected in serum and urine (PubMed:1336137, PubMed:7554280). {ECO:0000269 | PubMed:7554280, ECO:0000269 | Ref.6}

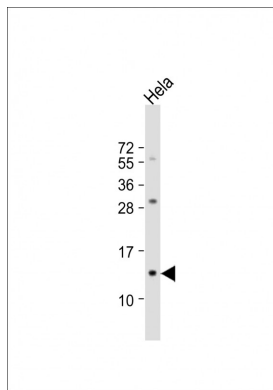
Background

Beta-2-microglobulin is a serum protein found in association with the major histocompatibility complex (MHC) class I heavy chain on the surface of nearly all nucleated cells.

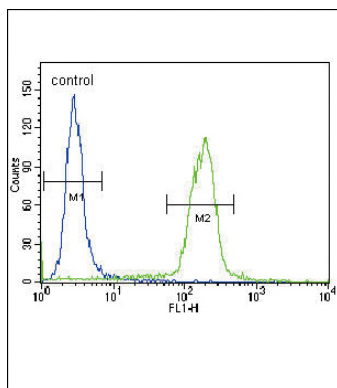
References

Sakata,M., J. Mol. Biol. 382 (5), 1242-1255 (2008)
Huang,W.C., Clin. Cancer Res. 14 (17), 5341-5347 (2008)
Gattoni-Celli,S., Cancer Res. 52 (5), 1201-1204 (1992)

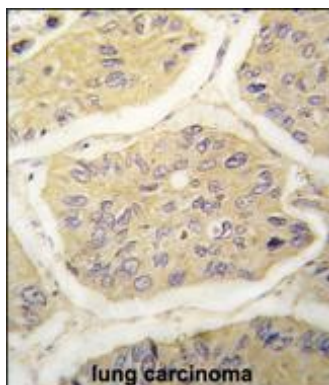
Images



Anti-B2M Antibody (N-term) at 1:1000 dilution + HeLa whole cell lysate Lysates/proteins at 20 µg per lane. Secondary Goat Anti-Rabbit IgG, (H+L), Peroxidase conjugated at 1/10000 dilution. Predicted band size : 14 kDa Blocking/Dilution buffer: 5% NFDM/TBST.



B2M Antibody (N-term) (Cat. #AP2771a) flow cytometric analysis of HeLa cells (right histogram) compared to a negative control cell (left histogram).FITC-conjugated goat-anti-rabbit secondary antibodies were used for the analysis.



Formalin-fixed and paraffin-embedded human lung carcinoma tissue reacted with B2M antibody (N-term) (Cat.#AP2771a), which was peroxidase-conjugated to the secondary antibody, followed by DAB staining. This data demonstrates the use of this antibody for immunohistochemistry; clinical relevance has not been evaluated.

Please note: All products are 'FOR RESEARCH USE ONLY. NOT FOR USE IN DIAGNOSTIC OR THERAPEUTIC PROCEDURES'.