

B2M Antibody (C-term Y86)

Affinity Purified Rabbit Polyclonal Antibody (Pab)

Catalog # AP2771d

Product Information

Application	WB, E
Primary Accession	P61769
Reactivity	Human
Host	Rabbit
Clonality	Polyclonal
Isotype	Rabbit IgG
Calculated MW	13715
Antigen Region	71-98

Additional Information

Gene ID	567
Other Names	Beta-2-microglobulin, Beta-2-microglobulin form pI 53, B2M
Target/Specificity	This B2M antibody is generated from rabbits immunized with a KLH conjugated synthetic peptide between 71-98 amino acids from the C-terminal region of human B2M.
Dilution	WB~~1:1000 E~~Use at an assay dependent concentration.
Format	Purified polyclonal antibody supplied in PBS with 0.09% (W/V) sodium azide. This antibody is purified through a protein A column, followed by peptide affinity purification.
Storage	Maintain refrigerated at 2-8°C for up to 2 weeks. For long term storage store at -20°C in small aliquots to prevent freeze-thaw cycles.
Precautions	B2M Antibody (C-term Y86) is for research use only and not for use in diagnostic or therapeutic procedures.

Protein Information

Name	B2M (HGNC:914)
Function	Component of the class I major histocompatibility complex (MHC). Involved in the presentation of peptide antigens to the immune system. Exogenously applied M.tuberculosis EsxA or EsxA-EsxB (or EsxA expressed in host) binds B2M and decreases its export to the cell surface (total protein levels do not change), probably leading to defects in class I antigen presentation (PubMed: 25356553).

Cellular Location

Secreted. Cell surface. Note=Detected in serum and urine (PubMed:1336137, PubMed:7554280). {ECO:0000269|PubMed:7554280, ECO:0000269|Ref.6}

Background

Beta-2-microglobulin is a serum protein found in association with the major histocompatibility complex (MHC) class I heavy chain on the surface of nearly all nucleated cells.

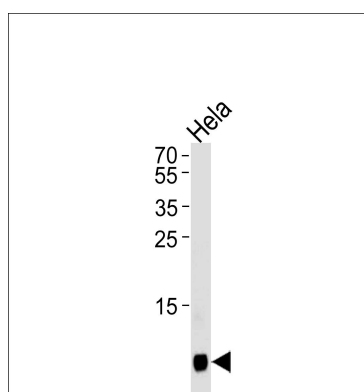
References

Sakata,M., J. Mol. Biol. 382 (5), 1242-1255 (2008)

Huang,W.C., Clin. Cancer Res. 14 (17), 5341-5347 (2008)

Gattoni-Celli,S., Cancer Res. 52 (5), 1201-1204 (1992)

Images



B2M Antibody (C-term) (Cat. #AP2771d) western blot analysis in HeLa cell line lysates (35ug/lane). This demonstrates the B2M antibody detected the B2M protein (arrow).

Please note: All products are 'FOR RESEARCH USE ONLY. NOT FOR USE IN DIAGNOSTIC OR THERAPEUTIC PROCEDURES'.