

# ITGB1BP3 Antibody (Center)

Purified Rabbit Polyclonal Antibody (Pab)

Catalog # AP2791c

## Product Information

---

<b>Application</b>	WB, FC, E
<b>Primary Accession</b>	<a href="#">Q9NPI5</a>
<b>Other Accession</b>	<a href="#">NP_733778.1</a>
<b>Reactivity</b>	Human, Mouse
<b>Host</b>	Rabbit
<b>Clonality</b>	Polyclonal
<b>Isotype</b>	Rabbit IgG
<b>Clone Names</b>	RB15066
<b>Calculated MW</b>	26046
<b>Antigen Region</b>	156-186

## Additional Information

---

<b>Gene ID</b>	27231
<b>Other Names</b>	Nicotinamide riboside kinase 2, NRK 2, NmR-K 2, Integrin beta-1-binding protein 3, Muscle integrin-binding protein, MIBP, Nicotinic acid riboside kinase 2, Ribosylnicotinamide kinase 2, RNK 2, Ribosylnicotinic acid kinase 2, NMRK2, ITGB1BP3, NRK2
<b>Target/Specificity</b>	This ITGB1BP3 antibody is generated from rabbits immunized with a KLH conjugated synthetic peptide between 156-186 amino acids from the Central region of human ITGB1BP3.
<b>Dilution</b>	WB~~1:1000 FC~~1:10~50 E~~Use at an assay dependent concentration.
<b>Format</b>	Purified polyclonal antibody supplied in PBS with 0.09% (W/V) sodium azide. This antibody is prepared by Saturated Ammonium Sulfate (SAS) precipitation followed by dialysis against PBS.
<b>Storage</b>	Maintain refrigerated at 2-8°C for up to 2 weeks. For long term storage store at -20°C in small aliquots to prevent freeze-thaw cycles.
<b>Precautions</b>	ITGB1BP3 Antibody (Center) is for research use only and not for use in diagnostic or therapeutic procedures.

## Protein Information

---

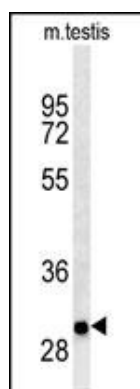
<b>Name</b>	NMRK2
<b>Synonyms</b>	ITGB1BP3, NRK2

<b>Function</b>	Catalyzes the phosphorylation of nicotinamide riboside (NR) and nicotinic acid riboside (NaR) to form nicotinamide mononucleotide (NMN) and nicotinic acid mononucleotide (NaMN). Reduces laminin matrix deposition and cell adhesion to laminin, but not to fibronectin. Involved in the regulation of PXN at the protein level and of PXN tyrosine phosphorylation. May play a role in the regulation of terminal myogenesis.
<b>Tissue Location</b>	Predominantly expressed in skeletal muscle and, at a much lower level, in the heart (at protein level). No expression in brain, kidney, liver, lung, pancreas nor placenta

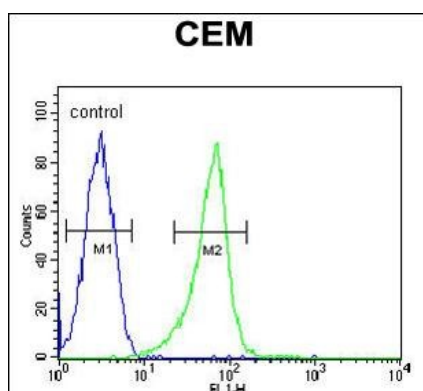
## References

Bieganski, P., et al. Cell 117(4):495-502(2004)  
 Li, J., et al. Dev. Biol. 261(1):209-219(2003)  
 Battle, M.A., et al. Biochemistry 42(24):7270-7282(2003)  
 Li, J., et al. J. Cell Biol. 147(7):1391-1398(1999)

## Images



ITGB1BP3 Antibody (Center) (Cat. #AP2791c) western blot analysis in mouse testis tissue lysates (35ug/lane). This demonstrates ITGB1BP3 antibody detected ITGB1BP3 protein (arrow).



ITGB1BP3 Antibody (Center) (Cat. #AP2791c) flow cytometric analysis of CEM cells (right histogram) compared to a negative control cell (left histogram). FITC-conjugated goat-anti-rabbit secondary antibodies were used for the analysis.

Please note: All products are 'FOR RESEARCH USE ONLY. NOT FOR USE IN DIAGNOSTIC OR THERAPEUTIC PROCEDURES'.