

DLG7 Antibody (N-term)

Purified Rabbit Polyclonal Antibody (Pab)

Catalog # AP2810a

Product Information

Application	WB, E
Primary Accession	Q15398
Reactivity	Human
Host	Rabbit
Clonality	Polyclonal
Isotype	Rabbit IgG
Clone Names	RB16545
Calculated MW	95115
Antigen Region	1-30

Additional Information

Gene ID	9787
Other Names	Disks large-associated protein 5, DAP-5, Discs large homolog 7, Disks large-associated protein DLG7, Hepatoma up-regulated protein, HURP, DLGAP5, DLG7, KIAA0008
Target/Specificity	This DLG7 antibody is generated from rabbits immunized with a KLH conjugated synthetic peptide between 1-30 amino acids from the N-terminal region of human DLG7.
Dilution	WB~~1:1000 E~~Use at an assay dependent concentration.
Format	Purified polyclonal antibody supplied in PBS with 0.09% (W/V) sodium azide. This antibody is prepared by Saturated Ammonium Sulfate (SAS) precipitation followed by dialysis against PBS.
Storage	Maintain refrigerated at 2-8°C for up to 2 weeks. For long term storage store at -20°C in small aliquots to prevent freeze-thaw cycles.
Precautions	DLG7 Antibody (N-term) is for research use only and not for use in diagnostic or therapeutic procedures.

Protein Information

Name	DLGAP5
Synonyms	DLG7, KIAA0008
Function	Potential cell cycle regulator that may play a role in carcinogenesis of cancer

cells. Mitotic phosphoprotein regulated by the ubiquitin-proteasome pathway. Key regulator of adherens junction integrity and differentiation that may be involved in CDH1-mediated adhesion and signaling in epithelial cells.

Cellular Location

Nucleus. Cytoplasm. Cytoplasm, cytoskeleton, spindle. Note=Localizes to the spindle in mitotic cells. Colocalizes with CDH1 at sites of cell-cell contact in intestinal epithelial cells

Tissue Location

Abundantly expressed in fetal liver. Expressed at lower levels in bone marrow, testis, colon, and placenta

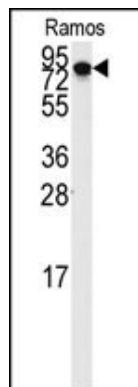
Background

DLG7 is a potential cell cycle regulator that may play a role in carcinogenesis of cancer cells and mitotic phosphoprotein regulated by the ubiquitin-proteasome pathway. The protein is also a key regulator of adherens junction integrity and differentiation that may be involved in CDH1-mediated adhesion and signaling in epithelial cells.

References

de Reynies,A., J. Clin. Oncol. 27 (7), 1108-1115 (2009)
Gudmundsson,K.O., Stem Cells 25 (6), 1498-1506 (2007)
Laprise,P., J. Biol. Chem. 279 (11), 10157-10166 (2004)

Images



Western blot analysis of anti-DLG7 Antibody (N-term) (Cat.#AP2810a) in Ramos cell line lysates (35ug/lane). DLG7(arrow) was detected using the purified Pab.

Please note: All products are 'FOR RESEARCH USE ONLY. NOT FOR USE IN DIAGNOSTIC OR THERAPEUTIC PROCEDURES'.