

DLG7 Antibody (Center)

Purified Rabbit Polyclonal Antibody (Pab)

Catalog # AP2810C

Product Information

Application	WB, IHC-P, FC, E
Primary Accession	Q15398
Reactivity	Human
Host	Rabbit
Clonality	Polyclonal
Isotype	Rabbit IgG
Clone Names	RB15030
Calculated MW	95115
Antigen Region	228-258

Additional Information

Gene ID	9787
Other Names	Disks large-associated protein 5, DAP-5, Discs large homolog 7, Disks large-associated protein DLG7, Hepatoma up-regulated protein, HURP, DLGAP5, DLG7, KIAA0008
Target/Specificity	This DLG7 antibody is generated from rabbits immunized with a KLH conjugated synthetic peptide between 228-258 amino acids from the Central region of human DLG7.
Dilution	WB~~1:1000 IHC-P~~1:100~500 FC~~1:10~50 E~~Use at an assay dependent concentration.
Format	Purified polyclonal antibody supplied in PBS with 0.09% (W/V) sodium azide. This antibody is prepared by Saturated Ammonium Sulfate (SAS) precipitation followed by dialysis against PBS.
Storage	Maintain refrigerated at 2-8°C for up to 2 weeks. For long term storage store at -20°C in small aliquots to prevent freeze-thaw cycles.
Precautions	DLG7 Antibody (Center) is for research use only and not for use in diagnostic or therapeutic procedures.

Protein Information

Name	DLGAP5
Synonyms	DLG7, KIAA0008

Function	Potential cell cycle regulator that may play a role in carcinogenesis of cancer cells. Mitotic phosphoprotein regulated by the ubiquitin-proteasome pathway. Key regulator of adherens junction integrity and differentiation that may be involved in CDH1-mediated adhesion and signaling in epithelial cells.
Cellular Location	Nucleus. Cytoplasm. Cytoplasm, cytoskeleton, spindle. Note=Localizes to the spindle in mitotic cells. Colocalizes with CDH1 at sites of cell-cell contact in intestinal epithelial cells
Tissue Location	Abundantly expressed in fetal liver. Expressed at lower levels in bone marrow, testis, colon, and placenta

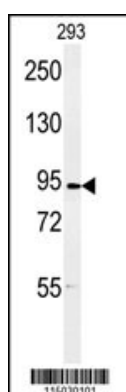
Background

DLG7 is potential cell cycle regulator that may play a role in carcinogenesis of cancer cells. DLG7 is mitotic phosphoprotein regulated by the ubiquitin-proteasome pathway. DLG7 is key regulator of adherens junction integrity and differentiation that may be involved in CDH1-mediated adhesion and signaling in epithelial cells.

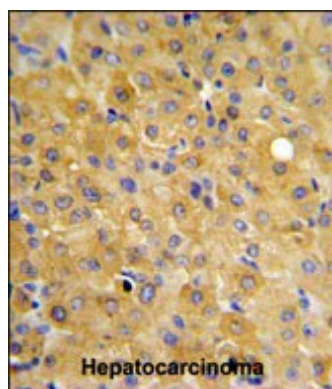
References

de Reynies, A., et al. J. Clin. Oncol. 27(7):1108-1115(2009) Wong, J., et al. Mol. Biol. Cell 19(5):2083-2091(2008) Gudmundsson, K.O., et al. Stem Cells 25(6):1498-1506(2007)

Images

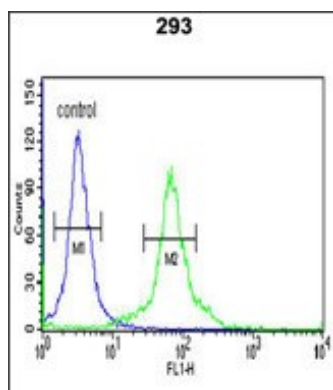


Western blot analysis of DLG7 Antibody (Center) (Cat. #AP2810c) in 293 cell line lysates (35ug/lane).DLG7 (arrow) was detected using the purified Pab.



DLG7 Antibody (Center) (Cat. #AP2810c) IHC analysis in formalin fixed and paraffin embedded hepatocarcinoma followed by peroxidase conjugation of the secondary antibody and DAB staining. This data demonstrates the use of the DLG7 Antibody (Center) for immunohistochemistry. Clinical relevance has not been evaluated.

DLG7 Antibody (Center) (Cat. #AP2810c) flow cytometric analysis of 293 cells (right histogram) compared to a negative control cell (left histogram).FITC-conjugated goat-anti-rabbit secondary antibodies were used for the analysis.



Please note: All products are 'FOR RESEARCH USE ONLY. NOT FOR USE IN DIAGNOSTIC OR THERAPEUTIC PROCEDURES'.