

STIP1 Antibody (C-term)

Purified Rabbit Polyclonal Antibody (Pab)

Catalog # AP2817b

Product Information

Application	FC, WB, E
Primary Accession	P31948
Other Accession	Q35814 , Q60864 , Q4R8N7 , O54981 , Q3ZBZ8
Reactivity	Human, Rat, Mouse
Predicted	Bovine, Hamster, Monkey, Rat
Host	Rabbit
Clonality	Polyclonal
Isotype	Rabbit IgG
Clone Names	RB17354
Calculated MW	62639
Antigen Region	461-488

Additional Information

Gene ID	10963
Other Names	Stress-induced-phosphoprotein 1, STI1, Hsc70/Hsp90-organizing protein, Hop, Renal carcinoma antigen NY-REN-11, Transformation-sensitive protein IEF SSP 3521, STIP1
Target/Specificity	This STIP1 antibody is generated from rabbits immunized with a KLH conjugated synthetic peptide between 461-488 amino acids from the C-terminal region of human STIP1.
Dilution	FC~~1:10~50 WB~~1:1000 E~~Use at an assay dependent concentration.
Format	Purified polyclonal antibody supplied in PBS with 0.09% (W/V) sodium azide. This antibody is prepared by Saturated Ammonium Sulfate (SAS) precipitation followed by dialysis against PBS.
Storage	Maintain refrigerated at 2-8°C for up to 2 weeks. For long term storage store at -20°C in small aliquots to prevent freeze-thaw cycles.
Precautions	STIP1 Antibody (C-term) is for research use only and not for use in diagnostic or therapeutic procedures.

Protein Information

Name	STIP1 (HGNC:11387)
Function	Acts as a co-chaperone for HSP90AA1 (PubMed: 27353360). Mediates the

association of the molecular chaperones HSPA8/HSC70 and HSP90 (By similarity).

Cellular Location

Cytoplasm {ECO:0000250|UniProtKB:Q60864}. Nucleus {ECO:0000250|UniProtKB:Q60864}. Dynein axonemal particle {ECO:0000250|UniProtKB:Q7ZWU1}

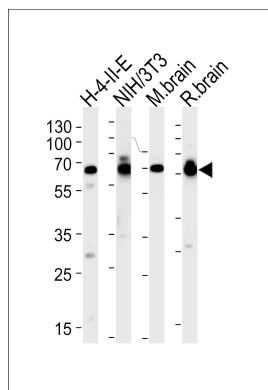
Background

STIP1 mediates the association of the molecular chaperones HSC70 and HSP90 (HSPCA and HSPCB).

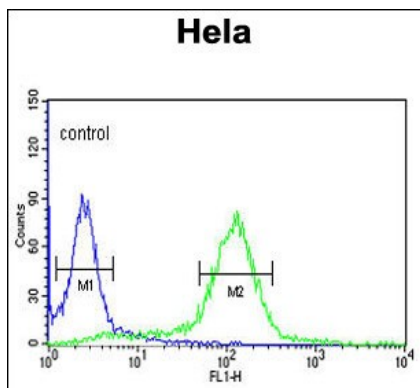
References

Onuoha,S.C., J. Mol. Biol. 379 (4), 732-744 (2008)
Erlich,R.B., Glia 55 (16), 1690-1698 (2007)

Images



Western blot analysis of lysates from H-4-II-E, mouse NIH/3T3 cell line, mouse brain and rat brain tissues (from left to right), using STIP1 Antibody (C-term) (Cat. #AP2817b). AP2817b was diluted at 1:1000 at each lane. A goat anti-rabbit (HRP) at 1:5000 dilution was used as the secondary antibody. Lysates at 35ug per lane.



STIP1 Antibody (C-term) (Cat. #AP2817b) flow cytometric analysis of Hela cells (right histogram) compared to a negative control cell (left histogram). FITC-conjugated goat-anti-rabbit secondary antibodies were used for the analysis.

Citations

- [Increased expression of stress inducible protein 1 in glioma-associated microglia/macrophages.](#)

Please note: All products are 'FOR RESEARCH USE ONLY. NOT FOR USE IN DIAGNOSTIC OR THERAPEUTIC PROCEDURES'.