

# NPM1 Antibody (N-term)

Purified Rabbit Polyclonal Antibody (Pab)

Catalog # AP2834a

## Product Information

---

<b>Application</b>	IHC-P, FC, IF, WB, E
<b>Primary Accession</b>	<a href="#">P06748</a>
<b>Other Accession</b>	<a href="#">P13084</a> , <a href="#">Q61937</a>
<b>Reactivity</b>	Human, Rat, Mouse
<b>Predicted</b>	Mouse, Rat
<b>Host</b>	Rabbit
<b>Clonality</b>	Polyclonal
<b>Isotype</b>	Rabbit IgG
<b>Calculated MW</b>	32575
<b>Antigen Region</b>	7-33

## Additional Information

---

<b>Gene ID</b>	4869
<b>Other Names</b>	Nucleophosmin, NPM, Nucleolar phosphoprotein B23, Nucleolar protein NO38, Numatrin, NPM1, NPM
<b>Target/Specificity</b>	This NPM1 antibody is generated from rabbits immunized with a KLH conjugated synthetic peptide between 7-33 amino acids from the N-terminal region of human NPM1.
<b>Dilution</b>	IHC-P~~1:100~500 FC~~1:10~50 IF~~1:10~50 WB~~1:1000 E~~Use at an assay dependent concentration.
<b>Format</b>	Purified polyclonal antibody supplied in PBS with 0.09% (W/V) sodium azide. This antibody is prepared by Saturated Ammonium Sulfate (SAS) precipitation followed by dialysis against PBS.
<b>Storage</b>	Maintain refrigerated at 2-8°C for up to 2 weeks. For long term storage store at -20°C in small aliquots to prevent freeze-thaw cycles.
<b>Precautions</b>	NPM1 Antibody (N-term) is for research use only and not for use in diagnostic or therapeutic procedures.

## Protein Information

---

<b>Name</b>	NPM1 ( <a href="#">HGNC:7910</a> )
<b>Synonyms</b>	NPM

## Function

Involved in diverse cellular processes such as ribosome biogenesis, centrosome duplication, protein chaperoning, histone assembly, cell proliferation, and regulation of tumor suppressors p53/TP53 and ARF. Binds ribosome presumably to drive ribosome nuclear export. Associated with nucleolar ribonucleoprotein structures and bind single-stranded nucleic acids. Acts as a chaperonin for the core histones H3, H2B and H4. Stimulates APEX1 endonuclease activity on apurinic/apyrimidinic (AP) double-stranded DNA but inhibits APEX1 endonuclease activity on AP single-stranded RNA. May exert a control of APEX1 endonuclease activity within nucleoli devoted to repair AP on rDNA and the removal of oxidized rRNA molecules. In concert with BRCA2, regulates centrosome duplication. Regulates centriole duplication: phosphorylation by PLK2 is able to trigger centriole replication. Negatively regulates the activation of EIF2AK2/PKR and suppresses apoptosis through inhibition of EIF2AK2/PKR autophosphorylation. Antagonizes the inhibitory effect of ATF5 on cell proliferation and relieves ATF5-induced G2/M blockade (PubMed:[22528486](#)). In complex with MYC enhances the transcription of MYC target genes (PubMed:[25956029](#)). May act as chaperonin or cotransporter in the nucleolar localization of transcription termination factor TTF1 (By similarity).

## Cellular Location

Nucleus, nucleolus. Nucleus, nucleoplasm. Cytoplasm, cytoskeleton, microtubule organizing center, centrosome Note=Generally nucleolar, but is translocated to the nucleoplasm in case of serum starvation or treatment with anticancer drugs. Has been found in the cytoplasm in patients with primary acute myelogenous leukemia (AML), but not with secondary AML. Co-localizes with the methylated form of RPS10 in the granular component (GC) region of the nucleolus. Colocalized with nucleolin and APEX1 in nucleoli. Isoform 1 of NEK2 is required for its localization to the centrosome during mitosis. Can shuttle between cytoplasm and nucleus (PubMed:38231884)

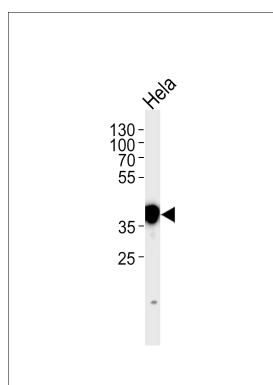
## Background

NPM1 is a ubiquitously expressed nucleolar protein that shuttles between the nucleus and cytoplasm. It is implicated in multiple functions, including ribosomal protein assembly and transport, control of centrosome duplication, and regulation of the tumor suppressor ARF. NPM1 mutations that relocalize NPM1 from the nucleus into the cytoplasm are associated with development of acute myeloid leukemia.

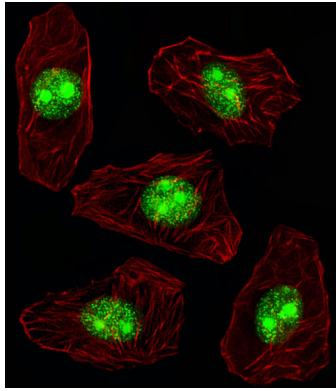
## References

Vascotto,C., Mol. Cell. Biol. 29 (7), 1834-1854 (2009)  
Ma,W., Cancer Biomark 5 (1), 51-58 (2009)  
Zhang,H., J. Biol. Chem. 279 (34), 35726-35734 (2004)

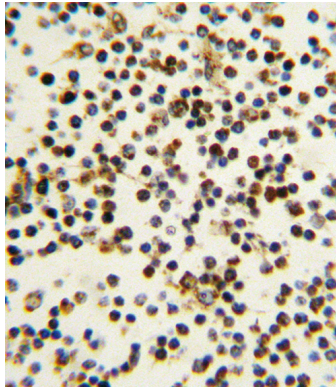
## Images



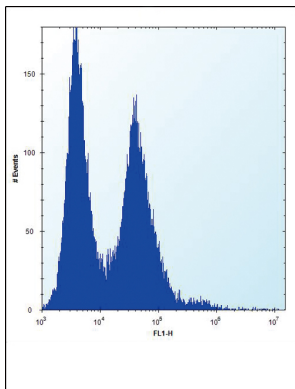
NPM1 Antibody (N-term) (Cat. #AP2834a) western blot analysis in HeLa cell line lysates (35ug/lane). This demonstrates the NPM1 antibody detected the NPM1 protein (arrow).



Fluorescent image of A549 cell stained with NPM1 Antibody (N-term)(Cat#AP2834a/SH090227B).A549 cells were fixed with 4% PFA (20 min), permeabilized with Triton X-100 (0.1%, 10 min), then incubated with NPM1 primary antibody (1:25, 1 h at 37°C). For secondary antibody, Alexa Fluor® 488 conjugated donkey anti-rabbit antibody (green) was used (1:400, 50 min at 37°C).Cytoplasmic actin was counterstained with Alexa Fluor® 555 (red) conjugated Phalloidin (7units/ml, 1 h at 37°C).NPM1 immunoreactivity is localized to Nucleus and Nucleolus significantly.



Formalin-fixed and paraffin-embedded human lymph tissue reacted with NPM1 antibody (N-term) (Cat. #AP2834a), which was peroxidase-conjugated to the secondary antibody, followed by DAB staining. This data demonstrates the use of this antibody for immunohistochemistry; clinical relevance has not been evaluated.



NPM1 Antibody (N-term) (Cat. #AP2834a) flow cytometric analysis of Hela cells (right histogram) compared to a negative control cell (left histogram).FITC-conjugated donkey-anti-rabbit secondary antibodies were used for the analysis.

## Citations

- [The nucleolar protein LYAR facilitates ribonucleoprotein assembly of influenza A virus.](#)

Please note: All products are 'FOR RESEARCH USE ONLY. NOT FOR USE IN DIAGNOSTIC OR THERAPEUTIC PROCEDURES'.