

# SNRPD1 Antibody (C-term)

Purified Rabbit Polyclonal Antibody (Pab)

Catalog # AP2842b

## Product Information

---

<b>Application</b>	IHC-P, FC, WB, E
<b>Primary Accession</b>	<a href="#">P62314</a>
<b>Other Accession</b>	<a href="#">P62315</a> , <a href="#">Q4R5F6</a> , <a href="#">Q3ZC10</a>
<b>Reactivity</b>	Human
<b>Predicted</b>	Bovine, Monkey, Mouse
<b>Host</b>	Rabbit
<b>Clonality</b>	Polyclonal
<b>Isotype</b>	Rabbit IgG
<b>Clone Names</b>	RB17342
<b>Calculated MW</b>	13282
<b>Antigen Region</b>	69-98

## Additional Information

---

<b>Gene ID</b>	6632
<b>Other Names</b>	Small nuclear ribonucleoprotein Sm D1, Sm-D1, Sm-D autoantigen, snRNP core protein D1, SNRPD1
<b>Target/Specificity</b>	This SNRPD1 antibody is generated from rabbits immunized with a KLH conjugated synthetic peptide between 69-98 amino acids from the C-terminal region of human SNRPD1.
<b>Dilution</b>	IHC-P~~1:100~500 FC~~1:10~50 WB~~1:1000 E~~Use at an assay dependent concentration.
<b>Format</b>	Purified polyclonal antibody supplied in PBS with 0.09% (W/V) sodium azide. This antibody is prepared by Saturated Ammonium Sulfate (SAS) precipitation followed by dialysis against PBS.
<b>Storage</b>	Maintain refrigerated at 2-8°C for up to 2 weeks. For long term storage store at -20°C in small aliquots to prevent freeze-thaw cycles.
<b>Precautions</b>	SNRPD1 Antibody (C-term) is for research use only and not for use in diagnostic or therapeutic procedures.

## Protein Information

---

<b>Name</b>	SNRPD1
<b>Function</b>	Plays a role in pre-mRNA splicing as a core component of the spliceosomal

U1, U2, U4 and U5 small nuclear ribonucleoproteins (snRNPs), the building blocks of the spliceosome (PubMed:[11991638](#), PubMed:[18984161](#), PubMed:[19325628](#), PubMed:[23333303](#), PubMed:[25555158](#), PubMed:[26912367](#), PubMed:[28076346](#), PubMed:[28502770](#), PubMed:[28781166](#), PubMed:[32494006](#)). Component of both the pre-catalytic spliceosome B complex and activated spliceosome C complexes (PubMed:[11991638](#), PubMed:[26912367](#), PubMed:[28076346](#), PubMed:[28502770](#), PubMed:[28781166](#)). As a component of the minor spliceosome, involved in the splicing of U12- type introns in pre-mRNAs (PubMed:[15146077](#)). May act as a charged protein scaffold to promote snRNP assembly or strengthen snRNP-snRNP interactions through non-specific electrostatic contacts with RNA (PubMed:[23333303](#)).

## Cellular Location

Cytoplasm, cytosol. Nucleus. Note=SMN- mediated assembly into core snRNPs occurs in the cytosol before SMN- mediated transport to the nucleus to be included in spliceosomes

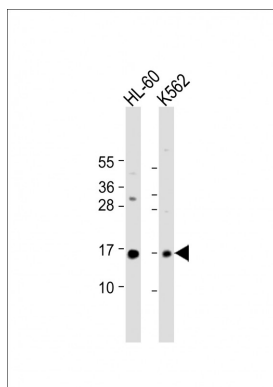
## Background

SNRPD1 is a small nuclear ribonucleoprotein that belongs to the SNRNP core protein family. This protein may act as a charged protein scaffold to promote SNRNP assembly or strengthen SNRNP-SNRNP interactions through nonspecific electrostatic contacts with RNA.

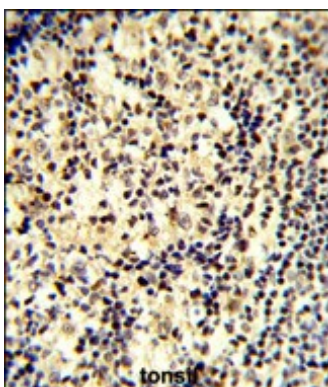
## References

Lehner,B., Genome Res. 14 (7), 1315-1323 (2004)  
Will,C.L., RNA 10 (6), 929-941 (2004)

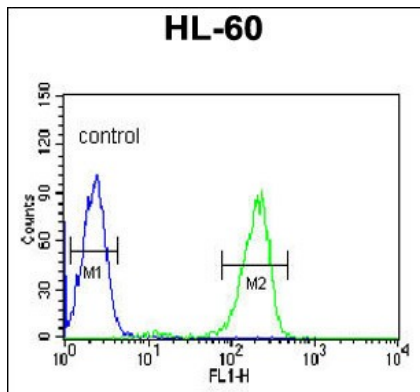
## Images



All lanes : Anti-SNRPD1 Antibody (C-term) at 1:1000 dilution Lane 1: HL-60 whole cell lysate Lane 2: K562 whole cell lysate Lysates/proteins at 20 µg per lane. Secondary Goat Anti-Rabbit IgG, (H+L), Peroxidase conjugated at 1/10000 dilution. Predicted band size : 13 kDa Blocking/Dilution buffer: 5% NFDM/TBST.



Formalin-fixed and paraffin-embedded human tonsil tissue reacted with CSNK2B Antibody, which was peroxidase-conjugated to the secondary antibody, followed by DAB staining. This data demonstrates the use of this antibody for immunohistochemistry; clinical relevance has not been evaluated.



SNRPD1 Antibody (C-term) (Cat. #AP2842b) flow cytometric analysis of HL-60 cells (right histogram) compared to a negative control cell (left histogram). FITC-conjugated goat-anti-rabbit secondary antibodies were used for the analysis.

Please note: All products are 'FOR RESEARCH USE ONLY. NOT FOR USE IN DIAGNOSTIC OR THERAPEUTIC PROCEDURES'.