

SNRPD1 Antibody (Center)

Purified Rabbit Polyclonal Antibody (Pab)

Catalog # AP2842c

Product Information

Application	IHC-P, FC, WB, E
Primary Accession	P62314
Other Accession	P62315 , Q4R5F6 , Q3ZC10
Reactivity	Human
Predicted	Bovine, Monkey, Mouse
Host	Rabbit
Clonality	Polyclonal
Isotype	Rabbit IgG
Clone Names	RB17341
Calculated MW	13282
Antigen Region	46-78

Additional Information

Gene ID	6632
Other Names	Small nuclear ribonucleoprotein Sm D1, Sm-D1, Sm-D autoantigen, snRNP core protein D1, SNRPD1
Target/Specificity	This SNRPD1 antibody is generated from rabbits immunized with a KLH conjugated synthetic peptide between 46-78 amino acids from the Central region of human SNRPD1.
Dilution	IHC-P~~1:100~500 FC~~1:10~50 WB~~1:1000 E~~Use at an assay dependent concentration.
Format	Purified polyclonal antibody supplied in PBS with 0.09% (W/V) sodium azide. This antibody is prepared by Saturated Ammonium Sulfate (SAS) precipitation followed by dialysis against PBS.
Storage	Maintain refrigerated at 2-8°C for up to 2 weeks. For long term storage store at -20°C in small aliquots to prevent freeze-thaw cycles.
Precautions	SNRPD1 Antibody (Center) is for research use only and not for use in diagnostic or therapeutic procedures.

Protein Information

Name	SNRPD1
Function	Plays a role in pre-mRNA splicing as a core component of the spliceosomal

U1, U2, U4 and U5 small nuclear ribonucleoproteins (snRNPs), the building blocks of the spliceosome (PubMed:[11991638](#), PubMed:[18984161](#), PubMed:[19325628](#), PubMed:[23333303](#), PubMed:[25555158](#), PubMed:[26912367](#), PubMed:[28076346](#), PubMed:[28502770](#), PubMed:[28781166](#), PubMed:[32494006](#)). Component of both the pre-catalytic spliceosome B complex and activated spliceosome C complexes (PubMed:[11991638](#), PubMed:[26912367](#), PubMed:[28076346](#), PubMed:[28502770](#), PubMed:[28781166](#)). As a component of the minor spliceosome, involved in the splicing of U12- type introns in pre-mRNAs (PubMed:[15146077](#)). May act as a charged protein scaffold to promote snRNP assembly or strengthen snRNP-snRNP interactions through non-specific electrostatic contacts with RNA (PubMed:[23333303](#)).

Cellular Location

Cytoplasm, cytosol. Nucleus. Note=SMN- mediated assembly into core snRNPs occurs in the cytosol before SMN- mediated transport to the nucleus to be included in spliceosomes

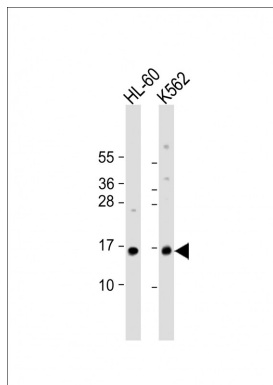
Background

SNRPD1 is a small nuclear ribonucleoprotein that belongs to the SNRNP core protein family. This protein may act as a charged protein scaffold to promote SNRNP assembly or strengthen SNRNP-SNRNP interactions through nonspecific electrostatic contacts with RNA.

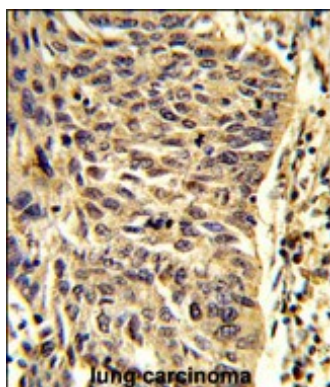
References

Lehner,B., Genome Res. 14 (7), 1315-1323 (2004)
Will,C.L., RNA 10 (6), 929-941 (2004)

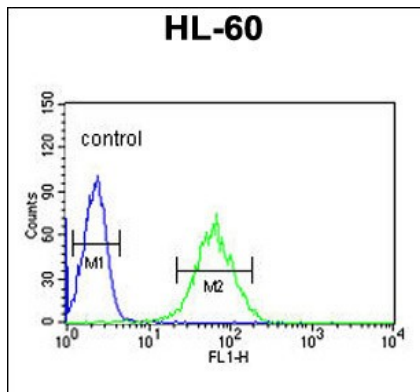
Images



All lanes : Anti-SNRPD1 Antibody (Center) at 1:1000 dilution Lane 1: HL-60 whole cell lysate Lane 2: K562 whole cell lysate Lysates/proteins at 20 µg per lane. Secondary Goat Anti-Rabbit IgG, (H+L), Peroxidase conjugated at 1/10000 dilution. Predicted band size : 13 kDa Blocking/Dilution buffer: 5% NFDm/TBST.



Formalin-fixed and paraffin-embedded human lung carcinoma reacted with MASTL Antibody, which was peroxidase-conjugated to the secondary antibody, followed by DAB staining. This data demonstrates the use of this antibody for immunohistochemistry; clinical relevance has not been evaluated.



SNRPD1 Antibody (Center) (Cat. #AP2842c) flow cytometric analysis of HL-60 cells (right histogram) compared to a negative control cell (left histogram). FITC-conjugated goat-anti-rabbit secondary antibodies were used for the analysis.

Please note: All products are 'FOR RESEARCH USE ONLY. NOT FOR USE IN DIAGNOSTIC OR THERAPEUTIC PROCEDURES'.