

RFC3 Antibody (Center)

Purified Rabbit Polyclonal Antibody (Pab)

Catalog # AP2860c

Product Information

Application	WB, FC, E
Primary Accession	P40938
Other Accession	Q8R323 , Q2TBV1
Reactivity	Human
Predicted	Bovine, Mouse
Host	Rabbit
Clonality	Polyclonal
Isotype	Rabbit IgG
Clone Names	RB17308
Calculated MW	40556
Antigen Region	121-150

Additional Information

Gene ID	5983
Other Names	Replication factor C subunit 3, Activator 1 38 kDa subunit, A1 38 kDa subunit, Activator 1 subunit 3, Replication factor C 38 kDa subunit, RF-C 38 kDa subunit, RFC38, RFC3
Target/Specificity	This RFC3 antibody is generated from rabbits immunized with a KLH conjugated synthetic peptide between 121-150 amino acids from the Central region of human RFC3.
Dilution	WB~~1:1000 FC~~1:10~50 E~~Use at an assay dependent concentration.
Format	Purified polyclonal antibody supplied in PBS with 0.09% (W/V) sodium azide. This antibody is prepared by Saturated Ammonium Sulfate (SAS) precipitation followed by dialysis against PBS.
Storage	Maintain refrigerated at 2-8°C for up to 2 weeks. For long term storage store at -20°C in small aliquots to prevent freeze-thaw cycles.
Precautions	RFC3 Antibody (Center) is for research use only and not for use in diagnostic or therapeutic procedures.

Protein Information

Name	RFC3
Function	Subunit of the replication factor C (RFC) complex which acts during

elongation of primed DNA templates by DNA polymerases delta and epsilon, and is necessary for ATP-dependent loading of proliferating cell nuclear antigen (PCNA) onto primed DNA.

Cellular Location

Nucleus.

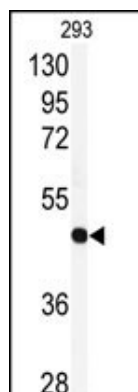
Background

The elongation of primed DNA templates by DNA polymerase delta and DNA polymerase epsilon requires the accessory proteins proliferating cell nuclear antigen (PCNA) and replication factor C (RFC). RFC, also named activator 1, is a protein complex consisting of five distinct subunits of 140, 40, 38, 37, and 36 kDa.

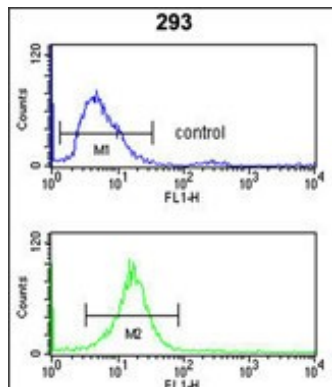
References

Rauen M., Burtelow M.A.J. Biol. Chem. 275:29767-29771(2000)

Images



Western blot analysis of anti-RFC3 Antibody (Center) (Cat.#AP2860c) in 293 cell line lysates (35ug/lane). RFC3 (arrow) was detected using the purified Pab.



RFC3 Antibody (Center) (Cat. #AP2860c) flow cytometry analysis of 293 cells (bottom histogram) compared to a negative control cell (top histogram). FITC-conjugated goat-anti-rabbit secondary antibodies were used for the analysis.

Please note: All products are 'FOR RESEARCH USE ONLY. NOT FOR USE IN DIAGNOSTIC OR THERAPEUTIC PROCEDURES'.