

# LSM1 Antibody (C-term)

Purified Rabbit Polyclonal Antibody (Pab)

Catalog # AP2863b

## Product Information

---

<b>Application</b>	WB, IHC-P, E
<b>Primary Accession</b>	<a href="#">Q15116</a>
<b>Other Accession</b>	<a href="#">Q8VC85</a>
<b>Reactivity</b>	Human
<b>Predicted</b>	Mouse
<b>Host</b>	Rabbit
<b>Clonality</b>	Polyclonal
<b>Isotype</b>	Rabbit IgG
<b>Clone Names</b>	RB17492
<b>Calculated MW</b>	15179
<b>Antigen Region</b>	103-133

## Additional Information

---

<b>Gene ID</b>	27257
<b>Other Names</b>	U6 snRNA-associated Sm-like protein LSm1, Cancer-associated Sm-like, Small nuclear ribonuclear CaSm, LSM1, CASM
<b>Target/Specificity</b>	This LSM1 antibody is generated from rabbits immunized with a KLH conjugated synthetic peptide between 103-133 amino acids from the C-terminal region of human LSM1.
<b>Dilution</b>	WB~~1:1000 IHC-P~~1:100~500 E~~Use at an assay dependent concentration.
<b>Format</b>	Purified polyclonal antibody supplied in PBS with 0.09% (W/V) sodium azide. This antibody is prepared by Saturated Ammonium Sulfate (SAS) precipitation followed by dialysis against PBS.
<b>Storage</b>	Maintain refrigerated at 2-8°C for up to 2 weeks. For long term storage store at -20°C in small aliquots to prevent freeze-thaw cycles.
<b>Precautions</b>	LSM1 Antibody (C-term) is for research use only and not for use in diagnostic or therapeutic procedures.

## Protein Information

---

<b>Name</b>	LSM1
<b>Synonyms</b>	CASM

<b>Function</b>	Plays a role in the degradation of histone mRNAs, the only eukaryotic mRNAs that are not polyadenylated (PubMed: <a href="#">18172165</a> ). Probably also part of an LSM subunits-containing complex involved in the general process of mRNA degradation (By similarity).
<b>Cellular Location</b>	Cytoplasm. Cytoplasm, P-body

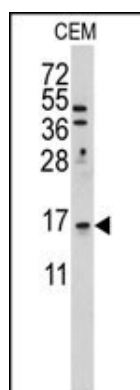
## Background

Sm-like proteins were identified in a variety of organisms based on sequence homology with the Sm protein family. Sm-like proteins contain the Sm sequence motif, which consists of 2 regions separated by a linker of variable length that folds as a loop. The Sm-like proteins are thought to form a stable heteromer present in tri-snRNP particles, which are important for pre-mRNA splicing.

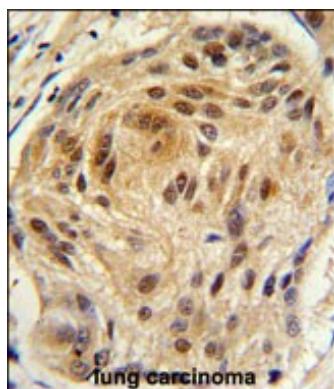
## References

Schweinfest C.W., Graber M.W., Chapman J.M., Papas T.S., Baron P.L., Cancer Res. 57:2961-2965(1997)

## Images



Western blot analysis of anti-LSM1 Antibody (C-term) (Cat.#AP2863b) in HeLa cell line lysates (35ug/lane). LSM1 (arrow) was detected using the purified Pab.



Formalin-fixed and paraffin-embedded human lung carcinoma tissue reacted with LSM1 antibody (C-term) (Cat. #AP2863b), which was peroxidase-conjugated to the secondary antibody, followed by DAB staining. This data demonstrates the use of this antibody for immunohistochemistry; clinical relevance has not been evaluated.

Please note: All products are 'FOR RESEARCH USE ONLY. NOT FOR USE IN DIAGNOSTIC OR THERAPEUTIC PROCEDURES'.