

LSM1 Antibody (Center)

Purified Rabbit Polyclonal Antibody (Pab)

Catalog # AP2863c

Product Information

Application	WB, E
Primary Accession	Q15116
Other Accession	Q8VC85 , Q5E9Z8
Reactivity	Human, Mouse
Predicted	Bovine
Host	Rabbit
Clonality	Polyclonal
Isotype	Rabbit IgG
Clone Names	RB17491
Calculated MW	15179
Antigen Region	33-61

Additional Information

Gene ID	27257
Other Names	U6 snRNA-associated Sm-like protein LSm1, Cancer-associated Sm-like, Small nuclear ribonuclear CaSm, LSM1, CASM
Target/Specificity	This LSM1 antibody is generated from rabbits immunized with a KLH conjugated synthetic peptide between 33-61 amino acids from the Central region of human LSM1.
Dilution	WB~~1:1000 E~~Use at an assay dependent concentration.
Format	Purified polyclonal antibody supplied in PBS with 0.09% (W/V) sodium azide. This antibody is prepared by Saturated Ammonium Sulfate (SAS) precipitation followed by dialysis against PBS.
Storage	Maintain refrigerated at 2-8°C for up to 2 weeks. For long term storage store at -20°C in small aliquots to prevent freeze-thaw cycles.
Precautions	LSM1 Antibody (Center) is for research use only and not for use in diagnostic or therapeutic procedures.

Protein Information

Name	LSM1
Synonyms	CASM

Function	Plays a role in the degradation of histone mRNAs, the only eukaryotic mRNAs that are not polyadenylated (PubMed: 18172165). Probably also part of an LSM subunits-containing complex involved in the general process of mRNA degradation (By similarity).
Cellular Location	Cytoplasm. Cytoplasm, P-body

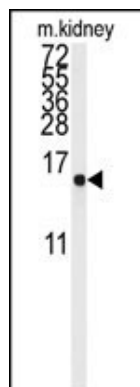
Background

Sm-like proteins were identified in a variety of organisms based on sequence homology with the Sm protein family. Sm-like proteins contain the Sm sequence motif, which consists of 2 regions separated by a linker of variable length that folds as a loop. The Sm-like proteins are thought to form a stable heteromer present in tri-snRNP particles, which are important for pre-mRNA splicing.

References

Schweinfest C.W., Graber M.W., Chapman J.M., Papas T.S., Baron P.L., Cancer Res. 57:2961-2965(1997)

Images



Western blot analysis of anti-LSM1 Antibody (Center) (Cat.#AP2863c) in mouse kidney tissue lysates (35ug/lane). LSM1 (arrow) was detected using the purified Pab.

Please note: All products are 'FOR RESEARCH USE ONLY. NOT FOR USE IN DIAGNOSTIC OR THERAPEUTIC PROCEDURES'.