

# CD201 Antibody (Center)

Purified Rabbit Polyclonal Antibody (Pab)

Catalog # AP2887c

## Product Information

---

Application	WB, IHC-P, FC, E
Primary Accession	<a href="#">Q9UNN8</a>
Reactivity	Human
Host	Rabbit
Clonality	Polyclonal
Isotype	Rabbit IgG
Clone Names	RB17995
Calculated MW	26671
Antigen Region	104-132

## Additional Information

---

Gene ID	10544
Other Names	Endothelial protein C receptor, Activated protein C receptor, APC receptor, Endothelial cell protein C receptor, CD201, PROCR, EPCR
Target/Specificity	This CD201 antibody is generated from rabbits immunized with a KLH conjugated synthetic peptide between 104-132 amino acids from the Central region of human CD201.
Dilution	WB~~1:1000 IHC-P~~1:100~500 FC~~1:10~50 E~~Use at an assay dependent concentration.
Format	Purified polyclonal antibody supplied in PBS with 0.09% (W/V) sodium azide. This antibody is prepared by Saturated Ammonium Sulfate (SAS) precipitation followed by dialysis against PBS.
Storage	Maintain refrigerated at 2-8°C for up to 2 weeks. For long term storage store at -20°C in small aliquots to prevent freeze-thaw cycles.
Precautions	CD201 Antibody (Center) is for research use only and not for use in diagnostic or therapeutic procedures.

## Protein Information

---

Name	PROCR
Synonyms	EPCR
Function	Binds activated protein C. Enhances protein C activation by the

thrombin-thrombomodulin complex; plays a role in the protein C pathway controlling blood coagulation.

**Cellular Location**

Membrane; Single-pass type I membrane protein.

**Tissue Location**

Expressed strongly in the endothelial cells of arteries and veins in heart and lung, less intensely in capillaries in the lung and skin, and not at all in the endothelium of small vessels of the liver and kidney

## Background

---

PROCR (CD201) is a receptor for activated protein C, a serine protease activated by and involved in the blood coagulation pathway. The protein is an N-glycosylated type I membrane protein that enhances the activation of protein C. Mutations in its gene have been associated with venous thromboembolism and myocardial infarction, as well as with late fetal loss during pregnancy.

## References

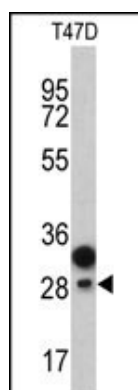
---

Menschikowski,M., Exp. Cell Res. 315 (15), 2673-2682 (2009)

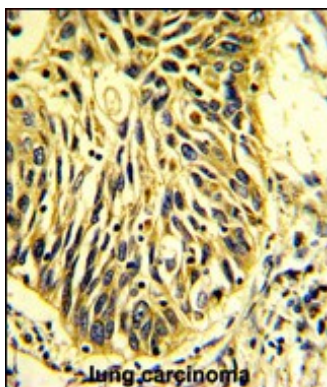
Nayak,R.C., Blood 114 (9), 1974-1986 (2009)

## Images

---

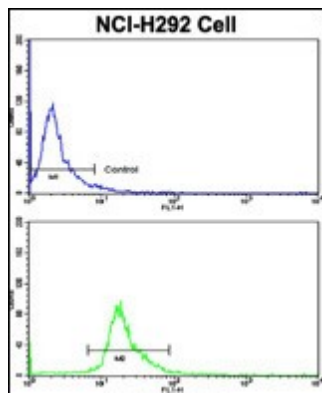


Western blot analysis of CD201 antibody (Center) (Cat. #AP2887c) in T47D cell line lysates (35ug/lane). CD201 (arrow) was detected using the purified Pab.



Formalin-fixed and paraffin-embedded human lung carcinoma with CD201 Antibody (Center), which was peroxidase-conjugated to the secondary antibody, followed by DAB staining. This data demonstrates the use of this antibody for immunohistochemistry; clinical relevance has not been evaluated.

Flow cytometric analysis of NCI-H292 cells using CD201 Antibody (Center)(bottom histogram) compared to a negative control cell (top histogram). FITC-conjugated goat-anti-rabbit secondary antibodies were used for the analysis.



Please note: All products are 'FOR RESEARCH USE ONLY. NOT FOR USE IN DIAGNOSTIC OR THERAPEUTIC PROCEDURES'.