

CCT3 Antibody (Center)

Purified Rabbit Polyclonal Antibody (Pab)

Catalog # AP2890c

Product Information

Application	WB, IHC-P, FC, E
Primary Accession	P49368
Other Accession	P50143 , Q6P502 , P80318 , Q4R963 , Q3T0K2
Reactivity	Human
Predicted	Bovine, Monkey, Mouse, Rat, Xenopus
Host	Rabbit
Clonality	Polyclonal
Isotype	Rabbit IgG
Clone Names	RB20521
Calculated MW	60534
Antigen Region	298-326

Additional Information

Gene ID	7203
Other Names	T-complex protein 1 subunit gamma, TCP-1-gamma, CCT-gamma, hTRiC5, CCT3, CCTG, TRIC5
Target/Specificity	This CCT3 antibody is generated from rabbits immunized with a KLH conjugated synthetic peptide between 298-326 amino acids from the Central region of human CCT3.
Dilution	WB~~1:1000 IHC-P~~1:100~500 FC~~1:10~50 E~~Use at an assay dependent concentration.
Format	Purified polyclonal antibody supplied in PBS with 0.09% (W/V) sodium azide. This antibody is prepared by Saturated Ammonium Sulfate (SAS) precipitation followed by dialysis against PBS.
Storage	Maintain refrigerated at 2-8°C for up to 2 weeks. For long term storage store at -20°C in small aliquots to prevent freeze-thaw cycles.
Precautions	CCT3 Antibody (Center) is for research use only and not for use in diagnostic or therapeutic procedures.

Protein Information

Name	CCT3
Synonyms	CCTG, TRIC5

Function	Component of the chaperonin-containing T-complex (TRiC), a molecular chaperone complex that assists the folding of actin, tubulin and other proteins upon ATP hydrolysis (PubMed: 25467444 , PubMed: 36493755 , PubMed: 35449234 , PubMed: 37193829). The TRiC complex mediates the folding of WRAP53/TCAB1, thereby regulating telomere maintenance (PubMed: 25467444). As part of the TRiC complex may play a role in the assembly of BBSome, a complex involved in ciliogenesis regulating transports vesicles to the cilia (PubMed: 20080638).
Cellular Location	Cytoplasm.

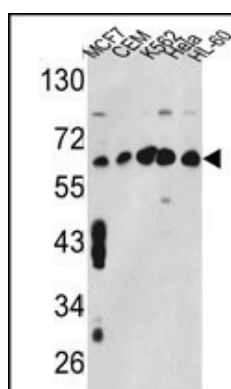
Background

CCT3 is a molecular chaperone that is member of the chaperonin containing TCP1 complex (CCT), also known as the TCP1 ring complex (TRiC). This complex consists of two identical stacked rings, each containing eight different proteins. Unfolded polypeptides enter the central cavity of the complex and are folded in an ATP-dependent manner. The complex folds various proteins, including actin and tubulin.

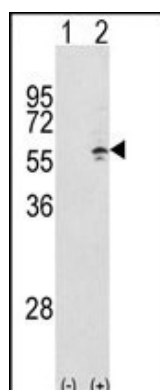
References

Zebol,J.R., Int. J. Biochem. Cell Biol. 41 (4), 822-827 (2009)

Images

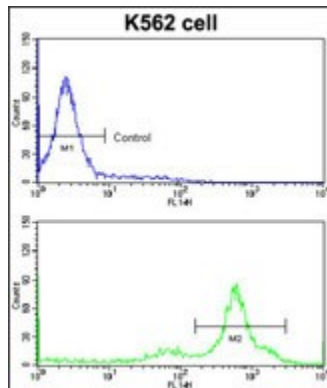
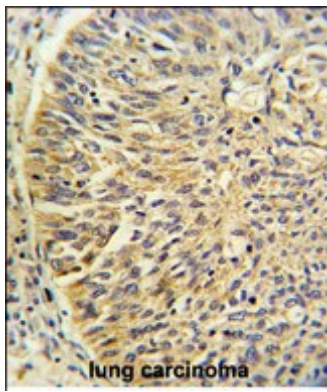


Western blot analysis of CCT3 Antibody (Center) (Cat. #AP2890c) in MCF7,CEM,K562,HL-60,Hela cell line lysates (35ug/lane).CCT3 (arrow) was detected using the purified Pab.



Western blot analysis of CCT3 (arrow) using rabbit polyclonal CCT3 Antibody (Center) (Cat. #AP2890c). 293 cell lysates (2 ug/lane) either nontransfected (Lane 1) or transiently transfected with the CCT3 gene (Lane 2) .

Formalin-fixed and paraffin-embedded human lung carcinoma reacted with CCT3 Antibody (Center), which was peroxidase-conjugated to the secondary antibody, followed by DAB staining. This data demonstrates the use of this antibody for immunohistochemistry; clinical relevance has not been evaluated.



Flow cytometric analysis of K562 cells using CCT3 Antibody (Center)(bottom histogram) compared to a negative control cell (top histogram) FITC-conjugated goat-anti-rabbit secondary antibodies were used for the analysis.

Please note: All products are 'FOR RESEARCH USE ONLY. NOT FOR USE IN DIAGNOSTIC OR THERAPEUTIC PROCEDURES'.