

AHSA1 Antibody (N-term)

Purified Rabbit Polyclonal Antibody (Pab)

Catalog # AP2892a

Product Information

Application	WB, FC, E
Primary Accession	Q95433
Other Accession	Q8BK64
Reactivity	Human
Predicted	Mouse
Host	Rabbit
Clonality	Polyclonal
Isotype	Rabbit IgG
Clone Names	RB20507
Calculated MW	38274
Antigen Region	1-30

Additional Information

Gene ID	10598
Other Names	Activator of 90 kDa heat shock protein ATPase homolog 1, AHA1, p38, AHSA1, C14orf3
Target/Specificity	This AHSA1 antibody is generated from rabbits immunized with a KLH conjugated synthetic peptide between 1-30 amino acids from the N-terminal region of human AHSA1.
Dilution	WB~~1:1000 FC~~1:10~50 E~~Use at an assay dependent concentration.
Format	Purified polyclonal antibody supplied in PBS with 0.09% (W/V) sodium azide. This antibody is prepared by Saturated Ammonium Sulfate (SAS) precipitation followed by dialysis against PBS.
Storage	Maintain refrigerated at 2-8°C for up to 2 weeks. For long term storage store at -20°C in small aliquots to prevent freeze-thaw cycles.
Precautions	AHSA1 Antibody (N-term) is for research use only and not for use in diagnostic or therapeutic procedures.

Protein Information

Name	AHSA1
Synonyms	C14orf3

Function	Acts as a co-chaperone of HSP90AA1 (PubMed: 29127155). Activates the ATPase activity of HSP90AA1 leading to increase in its chaperone activity (PubMed: 29127155). Competes with the inhibitory co- chaperone FNIP1 for binding to HSP90AA1, thereby providing a reciprocal regulatory mechanism for chaperoning of client proteins (PubMed: 27353360). Competes with the inhibitory co-chaperone TSC1 for binding to HSP90AA1, thereby providing a reciprocal regulatory mechanism for chaperoning of client proteins (PubMed: 29127155).
Cellular Location	Cytoplasm, cytosol. Endoplasmic reticulum. Note=May transiently interact with the endoplasmic reticulum
Tissue Location	Expressed in numerous tissues, including brain, heart, skeletal muscle and kidney and, at lower levels, liver and placenta.

Background

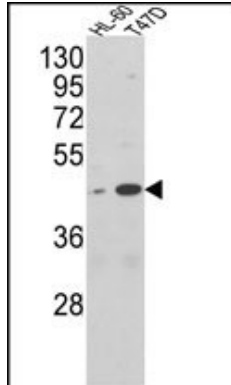
AHSA1 is a cochaperone that stimulates HSP90 ATPase activity. This protein may affect a step in the endoplasmic reticulum to Golgi trafficking.

References

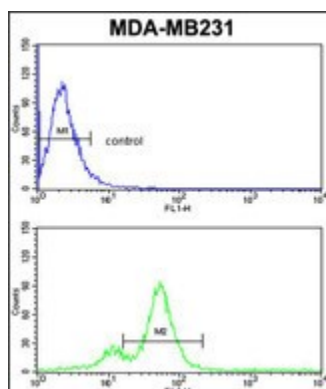
Wang,X.,et. al., Cell 127 (4), 803-815 (2006)

Panaretou,B., et. al., Mol. Cell 10 (6), 1307-1318 (2002)

Images



Western blot analysis of AHSA1 Antibody (N-term) (Cat. #AP2892a) in HL-60, T47D cell line lysates (35ug/lane). AHSA1 (arrow) was detected using the purified Pab.



AHSA1 Antibody (N-term) (Cat. #AP2892a) flow cytometric analysis of MDA-MB231 cells (bottom histogram) compared to a negative control cell (top histogram).FITC-conjugated goat-anti-rabbit secondary antibodies were used for the analysis.

Please note: All products are 'FOR RESEARCH USE ONLY. NOT FOR USE IN DIAGNOSTIC OR THERAPEUTIC PROCEDURES'.