

ERP29 Antibody (Center)

Purified Rabbit Polyclonal Antibody (Pab)

Catalog # AP2902c

Product Information

Application	WB, IHC-P, FC, E
Primary Accession	P30040
Reactivity	Human
Host	Rabbit
Clonality	Polyclonal
Isotype	Rabbit IgG
Clone Names	RB20540
Calculated MW	28993
Antigen Region	151-179

Additional Information

Gene ID	10961
Other Names	Endoplasmic reticulum resident protein 29, ERp29, Endoplasmic reticulum resident protein 28, ERp28, Endoplasmic reticulum resident protein 31, ERp31, ERP29, C12orf8, ERP28
Target/Specificity	This ERP29 antibody is generated from rabbits immunized with a KLH conjugated synthetic peptide between 151-179 amino acids from the Central region of human ERP29.
Dilution	WB~~1:1000 IHC-P~~1:100~500 FC~~1:10~50 E~~Use at an assay dependent concentration.
Format	Purified polyclonal antibody supplied in PBS with 0.09% (W/V) sodium azide. This antibody is prepared by Saturated Ammonium Sulfate (SAS) precipitation followed by dialysis against PBS.
Storage	Maintain refrigerated at 2-8°C for up to 2 weeks. For long term storage store at -20°C in small aliquots to prevent freeze-thaw cycles.
Precautions	ERP29 Antibody (Center) is for research use only and not for use in diagnostic or therapeutic procedures.

Protein Information

Name	ERP29
Synonyms	C12orf8, ERP28

Function	Does not seem to be a disulfide isomerase. Plays an important role in the processing of secretory proteins within the endoplasmic reticulum (ER), possibly by participating in the folding of proteins in the ER.
Cellular Location	Endoplasmic reticulum lumen. Melanosome. Note=Identified by mass spectrometry in melanosome fractions from stage I to stage IV
Tissue Location	Ubiquitous. Mostly expressed in secretory tissues.

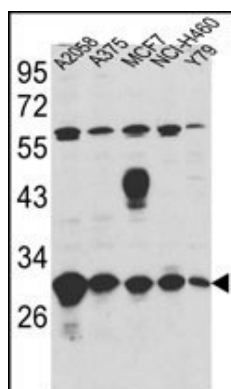
Background

ERP29 shows sequence similarity to the protein disulfide isomerase family. However, it lacks the thioredoxin motif characteristic of this family, suggesting that this protein does not function as a disulfide isomerase. The protein dimerizes and is thought to play a role in the processing of secretory proteins within the ER.

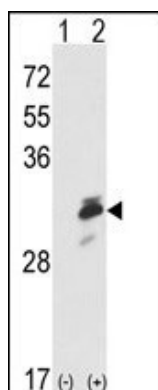
References

Bambang,I.F., et.al., Exp. Cell Res. 315 (11), 1964-1974 (2009)

Images

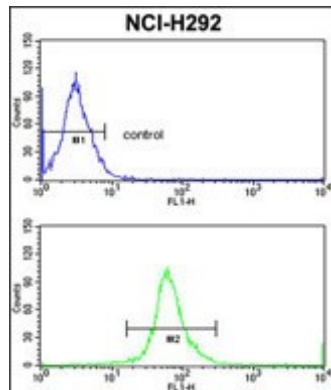
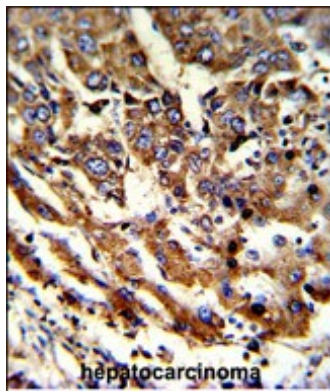


Western blot analysis of ERP29 Antibody (Center) (Cat. #AP2902c) in A2058,A375,MCF7,NCI-H460,Y79 cell line lysates (35ug/lane). ERP29 (arrow) was detected using the purified Pab.



Western blot analysis of ERP29 (arrow) using rabbit polyclonal ERP29 Antibody (Center) (Cat. #AP2902c). 293 cell lysates (2 ug/lane) either nontransfected (Lane 1) or transiently transfected with the ERP29 gene (Lane 2) .

Formalin-fixed and paraffin-embedded human hepatocarcinoma reacted with ERP29 Antibody (Center), which was peroxidase-conjugated to the secondary antibody, followed by DAB staining. This data demonstrates the use of this antibody for immunohistochemistry; clinical relevance has not been evaluated.



ERP29 Antibody (Center) (Cat. #AP2902c) flow cytometric analysis of NCI-H292 cells (bottom histogram) compared to a negative control cell (top histogram). FITC-conjugated goat-anti-rabbit secondary antibodies were used for the analysis.

Citations

- [Comparison of ILK and ERP29 expressions in benign and malignant pancreatic lesions and their clinicopathological significances in pancreatic ductal adenocarcinomas.](#)

Please note: All products are 'FOR RESEARCH USE ONLY. NOT FOR USE IN DIAGNOSTIC OR THERAPEUTIC PROCEDURES'.