

# MDH2 Antibody (Center)

Purified Rabbit Polyclonal Antibody (Pab)

Catalog # AP2909c

## Product Information

---

|                          |  |
|--------------------------|--|
| <b>Application</b>       | IHC-P, FC, WB, E   |
| <b>Primary Accession</b> | <a href="#">P40926</a>   |
| <b>Other Accession</b>   | <a href="#">P04636</a> , <a href="#">P00346</a> , <a href="#">P08249</a> , <a href="#">Q4R568</a> , <a href="#">O02640</a> , <a href="#">Q32LG3</a> , <a href="#">P22133</a> |
| <b>Reactivity</b>        | Human, Rat, Mouse  |
| <b>Predicted</b>         | Yeast, Bovine, C.Elegans, Monkey, Pig, Rat   |
| <b>Host</b>              | Rabbit   |
| <b>Clonality</b>         | Polyclonal   |
| <b>Isotype</b>           | Rabbit IgG   |
| <b>Calculated MW</b>     | 35503  |
| <b>Antigen Region</b>    | 86-115   |

## Additional Information

---

|                           |   |
|---------------------------|---|
| <b>Gene ID</b>            | 4191  |
| <b>Other Names</b>        | Malate dehydrogenase, mitochondrial, MDH2   |
| <b>Target/Specificity</b> | This MDH2 antibody is generated from rabbits immunized with a KLH conjugated synthetic peptide between 86-115 amino acids from the Central region of human MDH2.                          |
| <b>Dilution</b>           | IHC-P~~1:100~500 FC~~1:10~50 WB~~1:1000 E~~Use at an assay dependent concentration.   |
| <b>Format</b>             | Purified polyclonal antibody supplied in PBS with 0.09% (W/V) sodium azide. This antibody is prepared by Saturated Ammonium Sulfate (SAS) precipitation followed by dialysis against PBS. |
| <b>Storage</b>            | Maintain refrigerated at 2-8°C for up to 2 weeks. For long term storage store at -20°C in small aliquots to prevent freeze-thaw cycles.   |
| <b>Precautions</b>        | MDH2 Antibody (Center) is for research use only and not for use in diagnostic or therapeutic procedures.  |

## Protein Information

---

|                          |   |
|--------------------------|---|
| <b>Name</b>              | MDH2  |
| <b>Cellular Location</b> | Mitochondrion matrix {ECO:0000250 UniProtKB:P04636} |

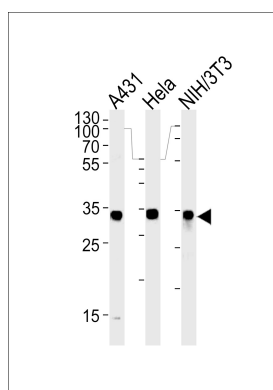
## Background

MDH2 is localized to the mitochondria and may play pivotal roles in the malate-aspartate shuttle that operates in the metabolic coordination between cytosol and mitochondria.

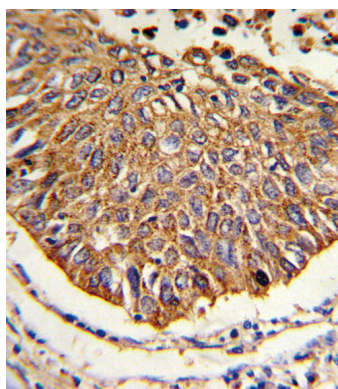
## References

Rzem,R.,et.al., J. Inherit. Metab. Dis. 30 (5), 681-689 (2007)

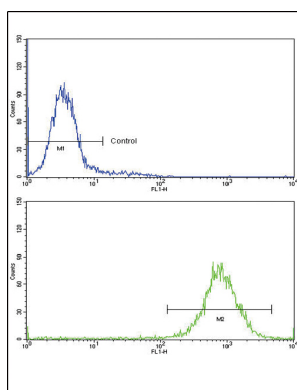
## Images



MDH2 Antibody (Center) (Cat. #AP2909c) western blot analysis in A431, HeLa and mouse NIH/3T3 cell line lysates (35ug/lane). This demonstrates the MDH2 antibody detected the MDH2 protein (arrow).



Formalin-fixed and paraffin-embedded human lung carcinoma reacted with MDH2 Antibody (Center), which was peroxidase-conjugated to the secondary antibody, followed by DAB staining. This data demonstrates the use of this antibody for immunohistochemistry; clinical relevance has not been evaluated.



Flow cytometric analysis of K562 cells using MDH2 Antibody (Center) (bottom histogram) compared to a negative control cell (top histogram). FITC-conjugated goat-anti-rabbit secondary antibodies were used for the analysis.

## Citations

- [SEIPIN Isoforms Interact with the Membrane-Tethering Protein VAP27-1 for Lipid Droplet Formation](#)

Please note: All products are 'FOR RESEARCH USE ONLY. NOT FOR USE IN DIAGNOSTIC OR THERAPEUTIC PROCEDURES'.