

# WDR1 Antibody (C-term)

Purified Rabbit Polyclonal Antibody (Pab)

Catalog # AP2919b

## Product Information

---

Application	WB, E
Primary Accession	<a href="#">Q75083</a>
Other Accession	<a href="#">Q2KJH4</a>
Reactivity	Human, Rat, Mouse
Predicted	Bovine
Host	Rabbit
Clonality	Polyclonal
Isotype	Rabbit IgG
Clone Names	RB20869
Calculated MW	66194
Antigen Region	548-577

## Additional Information

---

Gene ID	9948
Other Names	WD repeat-containing protein 1, Actin-interacting protein 1, AIP1, NORI-1, WDR1
Target/Specificity	This WDR1 antibody is generated from rabbits immunized with a KLH conjugated synthetic peptide between 548-577 amino acids from the C-terminal region of human WDR1.
Dilution	WB~~1:1000 E~~Use at an assay dependent concentration.
Format	Purified polyclonal antibody supplied in PBS with 0.09% (W/V) sodium azide. This antibody is prepared by Saturated Ammonium Sulfate (SAS) precipitation followed by dialysis against PBS.
Storage	Maintain refrigerated at 2-8°C for up to 2 weeks. For long term storage store at -20°C in small aliquots to prevent freeze-thaw cycles.
Precautions	WDR1 Antibody (C-term) is for research use only and not for use in diagnostic or therapeutic procedures.

## Protein Information

---

Name	WDR1
Function	Induces disassembly of actin filaments in conjunction with ADF/cofilin family proteins (PubMed: <a href="#">15629458</a> , PubMed: <a href="#">27557945</a> , PubMed: <a href="#">29751004</a> ).

Enhances cofilin-mediated actin severing (By similarity). Involved in cytokinesis. Involved in chemotactic cell migration by restricting lamellipodial membrane protrusions (PubMed:[18494608](#)). Involved in myocardium sarcomere organization. Required for cardiomyocyte growth and maintenance (By similarity). Involved in megakaryocyte maturation and platelet shedding. Required for the establishment of planar cell polarity (PCP) during follicular epithelium development and for cell shape changes during PCP; the function seems to implicate cooperation with CFL1 and/or DSTN/ADF. Involved in the generation/maintenance of cortical tension (By similarity). Involved in assembly and maintenance of epithelial apical cell junctions and plays a role in the organization of the perijunctional actomyosin belt (PubMed:[25792565](#)).

<b>Cellular Location</b>	Cytoplasm. Cytoplasm, cytoskeleton {ECO:0000250 UniProtKB:Q5RKI0}. Cell projection, podosome. Cell junction
<b>Tissue Location</b>	Expressed in peripheral blood mononuclear cells (at protein level).

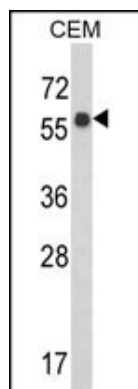
## Background

WDR1 is a protein containing 9 WD repeats. WD repeats are approximately 30- to 40-amino acid domains containing several conserved residues, mostly including a trp-asn at the C-terminal end. WD domains are involved in protein-protein interactions. This protein may help induce the disassembly of actin filaments.

## References

McArdle,P.F., et.al., Arthritis Rheum. 58 (9), 2874-2881 (2008)

## Images



Western blot analysis of WDR1 Antibody (C-term) (Cat. #AP2919b) in CEM cell line lysates (35ug/lane).WDR1 (arrow) was detected using the purified Pab.

Please note: All products are 'FOR RESEARCH USE ONLY. NOT FOR USE IN DIAGNOSTIC OR THERAPEUTIC PROCEDURES'.