

Bi-Phospho-YES1(Y537)/Phospho-SRC(Y530) Antibody

Affinity Purified Rabbit Polyclonal Antibody (Pab)

Catalog # AP3254a

Product Information

Application	WB, DB, IHC-P, E
Primary Accession	P12931
Other Accession	P05480 , Q1JPZ3 , P00523
Reactivity	Human, Rat, Mouse
Predicted	Mouse, Zebrafish, Chicken
Host	Rabbit
Clonality	Polyclonal
Isotype	Rabbit IgG

Additional Information

Other Names	Proto-oncogene tyrosine-protein kinase Src, Proto-oncogene c-Src, pp60c-src, p60-Src, SRC, SRC1
Target/Specificity	This SRC Antibody is generated from rabbits immunized with a KLH conjugated synthetic phosphopeptide corresponding to amino acid residues surrounding Y530 of human SRC.
Dilution	WB~~1:1000 DB~~1:500 IHC-P~~1:100~500 E~~Use at an assay dependent concentration.
Format	Purified polyclonal antibody supplied in PBS with 0.05% (V/V) Proclin 300. This antibody is purified through a protein A column, followed by peptide affinity purification.
Storage	Maintain refrigerated at 2-8°C for up to 2 weeks. For long term storage store at -20°C in small aliquots to prevent freeze-thaw cycles.
Precautions	Bi-Phospho-YES1(Y537)/Phospho-SRC(Y530) Antibody is for research use only and not for use in diagnostic or therapeutic procedures.

Protein Information

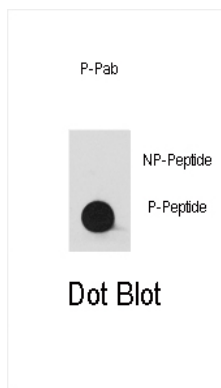
Background

This protein has tyrosine kinase activity and belongs to the src family of proteins. The YES1 gene is the cellular homolog of the Yamaguchi sarcoma virus oncogene.

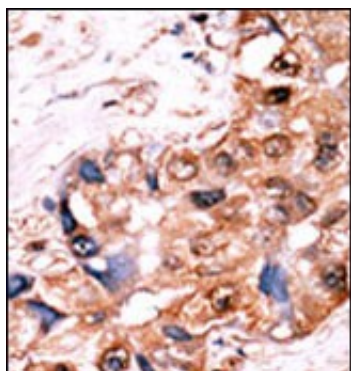
References

Anneren, C., et al., J. Biol. Chem. 279(30):31590-31598 (2004).
Reinehr, R., et al., J. Biol. Chem. 279(23):23977-23987 (2004).
Leclerc, P., et al., Biol. Reprod. 67(1):301-307 (2002).
Oh, H.S., et al., J. Biol. Chem. 277(39):36489-36498 (2002).
Silverman, G.A., et al., Genomics 15(2):442-445 (1993).

Images



Dot blot analysis of anti-Phospho-YES1-Y537/Phospho-SRC-Y530 Antibody (Cat.#AP3254a) on nitrocellulose membrane. 50ng of Phospho-peptide or Non Phospho-peptide per dot were adsorbed. Antibody working concentrations are 0.5ug per ml.



Formalin-fixed and paraffin-embedded human cancer tissue reacted with the primary antibody, which was peroxidase-conjugated to the secondary antibody, followed by AEC staining. This data demonstrates the use of this antibody for immunohistochemistry; clinical relevance has not been evaluated. BC = breast carcinoma; HC = hepatocarcinoma

Citations

- [Phosphorylation of collapsin response mediator protein 2 on Tyr-479 regulates CXCL12-induced T lymphocyte migration.](#)
- [Targeting the LOX/hypoxia axis reverses many of the features that make pancreatic cancer deadly: inhibition of LOX abrogates metastasis and enhances drug efficacy.](#)

Please note: All products are 'FOR RESEARCH USE ONLY. NOT FOR USE IN DIAGNOSTIC OR THERAPEUTIC PROCEDURES'.