

# Phospho-E2F1(S332) Antibody

Affinity Purified Rabbit Polyclonal Antibody (Pab)

Catalog # AP3485a

## Product Information

Application	DB, E
Primary Accession	<a href="#">Q01094</a>
Reactivity	Human
Host	Rabbit
Clonality	Polyclonal
Isotype	Rabbit IgG
Clone Names	RB8110
Calculated MW	46920

## Additional Information

Gene ID	1869
Other Names	Transcription factor E2F1, E2F-1, PBR3, Retinoblastoma-associated protein 1, RBAP-1, Retinoblastoma-binding protein 3, RBBP-3, pRB-binding protein E2F-1, E2F1, RBBP3
Target/Specificity	This E2F1 Antibody is generated from rabbits immunized with a KLH conjugated synthetic phosphopeptide corresponding to amino acid residues surrounding S332 of human E2F1.
Dilution	DB~~1:500 E~~Use at an assay dependent concentration.
Format	Purified polyclonal antibody supplied in PBS with 0.09% (W/V) sodium azide. This antibody is purified through a protein A column, followed by peptide affinity purification.
Storage	Maintain refrigerated at 2-8°C for up to 2 weeks. For long term storage store at -20°C in small aliquots to prevent freeze-thaw cycles.
Precautions	Phospho-E2F1(S332) Antibody is for research use only and not for use in diagnostic or therapeutic procedures.

## Protein Information

Name	E2F1 {ECO:0000303   PubMed:8964493, ECO:0000312   HGNC:HGNC:3113}
Function	Transcription activator that binds DNA cooperatively with DP proteins through the E2 recognition site, 5'-TTTC[CG]CGC-3' found in the promoter region of a number of genes whose products are involved in cell cycle regulation or in DNA replication (PubMed: <a href="#">10675335</a> , PubMed: <a href="#">12717439</a> ,

PubMed:[17050006](#), PubMed:[17704056](#), PubMed:[18625225](#), PubMed:[28992046](#)). The DRTF1/E2F complex functions in the control of cell-cycle progression from G1 to S phase (PubMed:[10675335](#), PubMed:[12717439](#), PubMed:[17704056](#)). E2F1 binds preferentially RB1 in a cell-cycle dependent manner (PubMed:[10675335](#), PubMed:[12717439](#), PubMed:[17704056](#)). It can mediate both cell proliferation and TP53/p53-dependent apoptosis (PubMed:[8170954](#)). Blocks adipocyte differentiation by binding to specific promoters repressing CEBPA binding to its target gene promoters (PubMed:[20176812](#)). Directly activates transcription of PEG10 (PubMed:[17050006](#), PubMed:[18625225](#), PubMed:[28992046](#)). Positively regulates transcription of RRP1B (PubMed:[20040599](#)).

#### Cellular Location

Nucleus

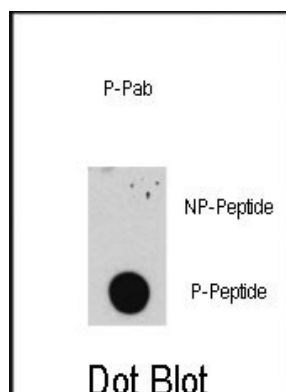
## Background

E2F1 is a member of the E2F family of transcription factors. The E2F family plays a crucial role in the control of cell cycle and action of tumor suppressor proteins and is also a target of the transforming proteins of small DNA tumor viruses. The E2F proteins contain several evolutionally conserved domains found in most members of the family. These domains include a DNA binding domain, a dimerization domain which determines interaction with the differentiation regulated transcription factor proteins (DP), a transactivation domain enriched in acidic amino acids, and a tumor suppressor protein association domain which is embedded within the transactivation domain. This protein and another 2 members, E2F2 and E2F3, have an additional cyclin binding domain. This protein binds preferentially to retinoblastoma protein pRB in a cell-cycle dependent manner. It can mediate both cell proliferation and p53-dependent/independent apoptosis.

## References

O'Donnell, K.A., et al., Nature 435(7043):839-843 (2005).  
Wang, C., et al., J. Biol. Chem. 280(13):12339-12343 (2005).  
Joshi, B., et al., Oncogene 24(13):2204-2217 (2005).  
Saberwal, G., et al., Int. J. Hematol. 80(2):146-154 (2004).  
Chaussepied, M., et al., Mol. Cell 16(5):831-837 (2004).

## Images



Dot blot analysis of anti-E2F1-pS332 Pab (RB08110) on nitrocellulose membrane. 50ng of Phospho-peptide or Non Phospho-peptide per dot were adsorbed. Antibody working concentrations are 0.5ug per ml.

Please note: All products are 'FOR RESEARCH USE ONLY. NOT FOR USE IN DIAGNOSTIC OR THERAPEUTIC PROCEDURES'.