

Phospho-RASGRF1(S929) Antibody

Affinity Purified Rabbit Polyclonal Antibody (Pab)

Catalog # AP3496a

Product Information

Application	WB, DB, E
Primary Accession	Q13972
Reactivity	Human
Host	Rabbit
Clonality	Polyclonal
Isotype	Rabbit IgG
Clone Names	RB14017
Calculated MW	145234

Additional Information

Gene ID	5923
Other Names	Ras-specific guanine nucleotide-releasing factor 1, Ras-GRF1, Guanine nucleotide-releasing protein, GNRP, Ras-specific nucleotide exchange factor CDC25, RASGRF1, CDC25, GNRP, GRF1
Target/Specificity	This RASGRF1 Antibody is generated from rabbits immunized with a KLH conjugated synthetic phosphopeptide corresponding to amino acid residues surrounding S929 of human RASGRF1.
Dilution	WB~~1:500 DB~~1:500 E~~Use at an assay dependent concentration.
Format	Purified polyclonal antibody supplied in PBS with 0.05% (V/V) Proclin 300. This antibody is purified through a protein A column, followed by peptide affinity purification.
Storage	Maintain refrigerated at 2-8°C for up to 2 weeks. For long term storage store at -20°C in small aliquots to prevent freeze-thaw cycles.
Precautions	Phospho-RASGRF1(S929) Antibody is for research use only and not for use in diagnostic or therapeutic procedures.

Protein Information

Name	RASGRF1
Synonyms	CDC25, GNRP, GRF1
Function	Promotes the exchange of Ras-bound GDP by GTP.

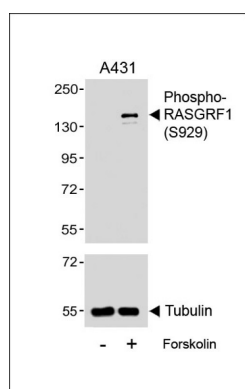
Background

RASGRF1 is a guanine nucleotide exchange factor (GEF) similar to the *Saccharomyces cerevisiae* CDC25 gene product. Functional analysis has demonstrated that this protein stimulates the dissociation of GDP from RAS protein. Studies of the similar gene in mouse suggested that the Ras-GEF activity of this protein in brain can be activated by Ca²⁺ influx, muscarinic receptors, and G protein beta-gamma subunit. Mouse studies also indicated that the Ras-GEF signaling pathway mediated by this protein may be important for long-term memory.

References

Iguchi,T., Int. J. Oncol. 31 (2), 285-291 (2007)
Holmes,R., Mol. Cell. Biol. 26 (24), 9564-9570 (2006)

Images



Western blot analysis of lysates from A431 cell line, untreated or treated with Forskolin(50μM, 30min), using Phospho-RASGRF1(S929) Antibody(upper) or Tubulin (lower).

Please note: All products are 'FOR RESEARCH USE ONLY. NOT FOR USE IN DIAGNOSTIC OR THERAPEUTIC PROCEDURES'.