

Phospho-Cdc25A(S79) Antibody

Affinity Purified Rabbit Polyclonal Antibody (Pab)

Catalog # AP3522a

Product Information

| | |
|--------------------------|--|
| Application | DB, E |
| Primary Accession | P30304 |
| Other Accession | P48965 , P48964 , A7MBD1 |
| Reactivity | Human |
| Predicted | Bovine, Mouse, Rat |
| Host | Rabbit |
| Clonality | Polyclonal |
| Isotype | Rabbit IgG |
| Clone Names | RB08125 |
| Calculated MW | 59087 |

Additional Information

| | |
|---------------------------|---|
| Gene ID | 993 |
| Other Names | M-phase inducer phosphatase 1, Dual specificity phosphatase Cdc25A, CDC25A |
| Target/Specificity | This Cdc25A Antibody is generated from rabbits immunized with a KLH conjugated synthetic phosphopeptide corresponding to amino acid residues surrounding S79 of human Cdc25A. |
| Dilution | DB~~1:500 E~~Use at an assay dependent concentration. |
| Format | Purified polyclonal antibody supplied in PBS with 0.09% (W/V) sodium azide. This antibody is purified through a protein A column, followed by peptide affinity purification. |
| Storage | Maintain refrigerated at 2-8°C for up to 2 weeks. For long term storage store at -20°C in small aliquots to prevent freeze-thaw cycles. |
| Precautions | Phospho-Cdc25A(S79) Antibody is for research use only and not for use in diagnostic or therapeutic procedures. |

Protein Information

| | |
|-----------------|--|
| Name | CDC25A |
| Function | Tyrosine protein phosphatase which functions as a dosage- dependent inducer of mitotic progression (PubMed: 12676925 , PubMed: 14559997 , PubMed: 1836978 , PubMed: 20360007). Directly dephosphorylates CDK1 and |

stimulates its kinase activity (PubMed:[20360007](#)). Also dephosphorylates CDK2 in complex with cyclin-E, in vitro (PubMed:[20360007](#)).

Background

CDC25A is a member of the CDC25 family of phosphatases. CDC25A is required for progression from G1 to the S phase of the cell cycle. It activates the cyclin-dependent kinase CDC2 by removing two phosphate groups. CDC25A is specifically degraded in response to DNA damage, which prevents cells with chromosomal abnormalities from progressing through cell division. CDC25A is an oncogene, although its exact role in oncogenesis has not been demonstrated.

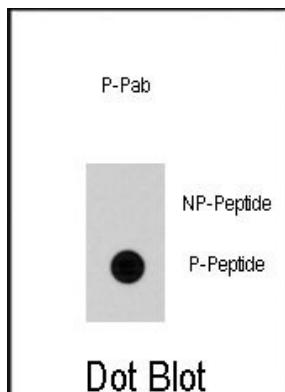
References

Ray,D.,Cancer Res. 68 (5), 1251-1253 (2008)

Xu,X.,Int. J. Mol. Med. 21 (2), 145-152 (2008)

Kang,T.,Cancer Cell 13 (1), 36-47 (2008)

Images



Dot blot analysis of anti-Cdc25A Phospho-specific Pab (Cat.#AP3522a) on nitrocellulose membrane. 50ng of Phospho-peptide or Non Phospho-peptide per dot were adsorbed. Antibody working concentrations are 0.5ug per ml.

Please note: All products are 'FOR RESEARCH USE ONLY. NOT FOR USE IN DIAGNOSTIC OR THERAPEUTIC PROCEDURES'.