

Phospho-NOMO1(S1205) Antibody

Affinity Purified Rabbit Polyclonal Antibody (Pab)

Catalog # AP3565a

Product Information

Application	WB, DB, E
Primary Accession	Q15155
Other Accession	P69849 , Q5JPE7
Reactivity	Human
Host	Rabbit
Clonality	Polyclonal
Isotype	Rabbit IgG
Clone Names	RB15368
Calculated MW	134324

Additional Information

Gene ID	23420
Other Names	Nodal modulator 1, pM5 protein, NOMO1, PM5
Target/Specificity	This NOMO1 Antibody is generated from rabbits immunized with a KLH conjugated synthetic phosphopeptide corresponding to amino acid residues surrounding S1205 of human NOMO1.
Dilution	WB~~1:1000 DB~~1:500 E~~Use at an assay dependent concentration.
Format	Purified polyclonal antibody supplied in PBS with 0.05% (V/V) Proclin 300. This antibody is purified through a protein A column, followed by peptide affinity purification.
Storage	Maintain refrigerated at 2-8°C for up to 2 weeks. For long term storage store at -20°C in small aliquots to prevent freeze-thaw cycles.
Precautions	Phospho-NOMO1(S1205) Antibody is for research use only and not for use in diagnostic or therapeutic procedures.

Protein Information

Name	NOMO1
Synonyms	PM5
Function	Component of the multi-pass translocon (MPT) complex that mediates insertion of multi-pass membrane proteins into the lipid bilayer of membranes (PubMed: 32820719 , PubMed: 36261522). The MPT complex takes

over after the SEC61 complex: following membrane insertion of the first few transmembrane segments of proteins by the SEC61 complex, the MPT complex occludes the lateral gate of the SEC61 complex to promote insertion of subsequent transmembrane regions (PubMed:[36261522](#)).

Cellular Location	Endoplasmic reticulum membrane; Single-pass type I membrane protein
Tissue Location	Expressed in colon tumor tissue and in adjacent normal colonic mucosa.

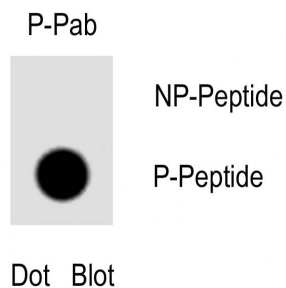
Background

NOMO1 was originally thought to be related to the collagenase family. The gene encoding NOMO1 is one of three highly similar genes in a region of duplication located on the p arm of chromosome 16. These three genes encode closely related proteins that may have the same function. The protein encoded by one of these genes has been identified as part of a protein complex that participates in the Nodal signaling pathway during vertebrate development.

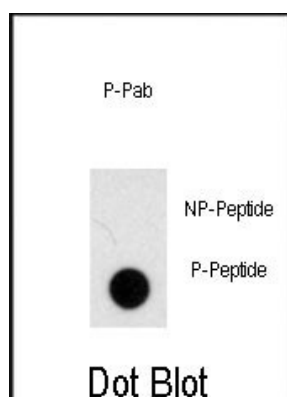
References

Blackshaw,S., PLoS Biol. 2 (9), E247 (2004)

Images



Dot blot analysis of Phospho-NOMO1(S1205)Antibody Phospho-specific Pab (Cat. AP3565a) on nitrocellulose membrane. 50ng of Phospho-peptide or Non Phospho-peptide per dot were adsorbed. Antibodies working concentration was 0.5ug per ml.



Dot blot analysis of anti-Phospho-NOMO1-pS1205 Antibody (Cat.#AP3565a) on nitrocellulose membrane. 50ng of Phospho-peptide or Non Phospho-peptide per dot were adsorbed. Antibody working concentrations are 0.5ug per ml.

Please note: All products are 'FOR RESEARCH USE ONLY. NOT FOR USE IN DIAGNOSTIC OR THERAPEUTIC PROCEDURES'.