

Phospho-PRL(S163) Antibody

Affinity Purified Rabbit Polyclonal Antibody (Pab)

Catalog # AP3573a

Product Information

Application	DB, E
Primary Accession	P01236
Other Accession	NP_000939
Reactivity	Human
Host	Rabbit
Clonality	Polyclonal
Isotype	Rabbit IgG
Clone Names	RB15528
Calculated MW	25876

Additional Information

Gene ID	5617
Other Names	Prolactin, PRL, PRL
Target/Specificity	This PRL Antibody is generated from rabbits immunized with a KLH conjugated synthetic phosphopeptide corresponding to amino acid residues surrounding S163 of human PRL.
Dilution	DB~~1:500 E~~Use at an assay dependent concentration.
Format	Purified polyclonal antibody supplied in PBS with 0.09% (W/V) sodium azide. This antibody is purified through a protein A column, followed by peptide affinity purification.
Storage	Maintain refrigerated at 2-8°C for up to 2 weeks. For long term storage store at -20°C in small aliquots to prevent freeze-thaw cycles.
Precautions	Phospho-PRL(S163) Antibody is for research use only and not for use in diagnostic or therapeutic procedures.

Protein Information

Name	PRL
Function	Prolactin acts primarily on the mammary gland by promoting lactation.
Cellular Location	Secreted.

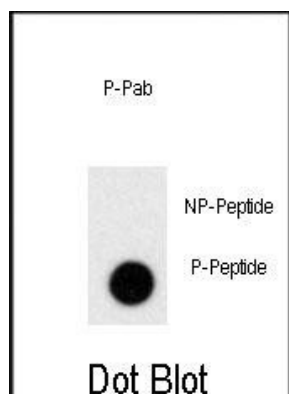
Background

Prolactin (PRL) acts primarily on the mammary gland by promoting lactation.

References

Liu, M.L., Int J Artif Organs 31 (4), 303-308 (2008)
Carver, K.C., Mol. Cancer Res. 6 (4), 634-643 (2008)
Swaminathan, G., J. Endocrinol. 196 (2), R1-R7 (2008)

Images



Dot blot analysis of anti-Phospho-PRL-pS163 Antibody (Cat.#AP3573a) on nitrocellulose membrane. 50ng of Phospho-peptide or Non Phospho-peptide per dot were adsorbed. Antibody working concentrations are 0.5ug per ml.

Please note: All products are 'FOR RESEARCH USE ONLY. NOT FOR USE IN DIAGNOSTIC OR THERAPEUTIC PROCEDURES'.