

Phospho-SPRY4(Y75) Antibody

Affinity Purified Rabbit Polyclonal Antibody (Pab)

Catalog # AP3585a

Product Information

Application	WB, DB, E
Primary Accession	Q9C004
Reactivity	Human
Host	Rabbit
Clonality	Polyclonal
Isotype	Rabbit IgG
Clone Names	RB15585
Calculated MW	32541

Additional Information

Gene ID	81848
Other Names	Protein sprouty homolog 4, Spry-4, SPRY4
Target/Specificity	This SPRY4 Antibody is generated from rabbits immunized with a KLH conjugated synthetic phosphopeptide corresponding to amino acid residues surrounding Y75 of human SPRY4.
Dilution	WB~~1:1000 DB~~1:500 E~~Use at an assay dependent concentration.
Format	Purified polyclonal antibody supplied in PBS with 0.05% (V/V) Proclin 300. This antibody is purified through a protein A column, followed by peptide affinity purification.
Storage	Maintain refrigerated at 2-8°C for up to 2 weeks. For long term storage store at -20°C in small aliquots to prevent freeze-thaw cycles.
Precautions	Phospho-SPRY4(Y75) Antibody is for research use only and not for use in diagnostic or therapeutic procedures.

Protein Information

Name	SPRY4
Function	Suppresses the insulin receptor and EGFR-transduced MAPK signaling pathway, but does not inhibit MAPK activation by a constitutively active mutant Ras (PubMed: 12027893). Probably impairs the formation of GTP-Ras (PubMed: 12027893). Inhibits Ras-independent, but not Ras-dependent, activation of RAF1 (PubMed: 12717443). Represses integrin-mediated cell spreading via inhibition of TESK1-mediated phosphorylation of cofilin

(PubMed:[15584898](#)).

Cellular Location

Cytoplasm. Cell projection, ruffle membrane; Peripheral membrane protein; Cytoplasmic side. Note=Found in the cytoplasm in unstimulated cells but is translocated to the membrane ruffles in cells stimulated with EGF (epidermal growth factor) (By similarity). Colocalizes with TESK1 in vesicular spots in the cytoplasm (PubMed:15584898) {ECO:0000250|UniProtKB:Q9WTP2, ECO:0000269|PubMed:15584898}

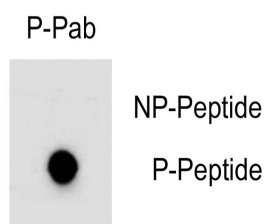
Background

SPRY4 is an inhibitor of the receptor-transduced mitogen-activated protein kinase (MAPK) signaling pathway. It is positioned upstream of RAS activation and impairs the formation of active GTP-RAS.

References

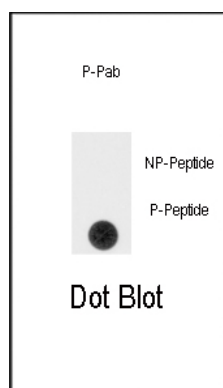
Tsai CF, et al. (2008) J Proteome Res
Guo A, et al. (2008) Proc Natl Acad Sci U S A 105, 692-7
Rikova K, et al. (2007) Cell 131, 1190-203
Wolf-Yadlin A, Hautaniemi S, Lauffenburger DA, White FM (2007) Proc Natl Acad Sci U S A 104, 5860-5
Tsumura Y, et al. (2005) Biochem J 387, 627-37

Images



Dot Blot

Dot blot analysis of anti-Phospho-SPRY4(Y75) Antibody (Cat. #AP3585a) on nitrocellulose membrane. 50ng of Phospho-peptide or Non Phospho-peptide per dot were adsorbed. Antibody working concentrations are 0.5ug per ml.



Dot Blot

Dot blot analysis of anti-Phospho-SPRY4-pY75 Antibody (Cat.#AP3585a) on nitrocellulose membrane. 50ng of Phospho-peptide or Non Phospho-peptide per dot were adsorbed. Antibody working concentrations are 0.5ug per ml.

Please note: All products are 'FOR RESEARCH USE ONLY. NOT FOR USE IN DIAGNOSTIC OR THERAPEUTIC PROCEDURES'.